



**Parts Series**

# CONNECTING BOLT

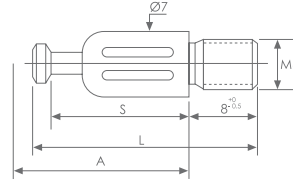
CF1001/ CF1002/ CF1003/ CF1004

CF1001



Technical specifications:

Material: iron+plastic



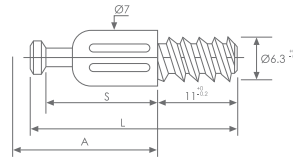
Code	Size
CF1001-A	A-24, S-20, L-32
CF1001-B	A-34, S-30, L-41

CF1002



Technical specifications:

Material: iron+plastic



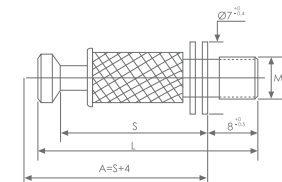
Code	Size
CF1002-A	A-24, S-20, L-34
CF1002-B	A-34, S-30, L-44

CF1003



Technical specifications:

Material: iron.



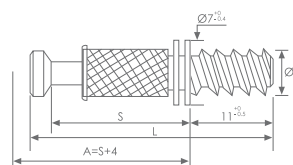
Code	Size
CF1003-A	A-24, S-20, L-32
CF1003-B	A-34, S-30, L-41

CF1004



Technical specifications:

Material: iron.



Code	Size
CF1004-A	A-24, S-20, L-34
CF1004-B	A-34, S-30, L-44

# CONNECTING BOLT

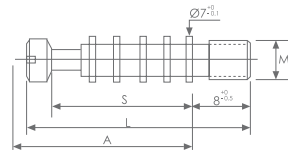
**CF1005/ CF1006/ CF1007/ CF1008**

CF1005



Technical specifications:

Material: iron.



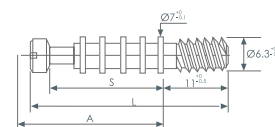
Code	Size
CF1005-A	A-24, S-20, L-32
CF1005-B	A-34, S-30, L-41

CF1006



Technical specifications:

Material: iron.



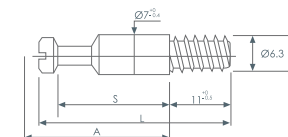
Code	Size
CF1006-A	A-24, S-20, L-34
CF1006-B	A-34, S-30, L-44

CF1007



Technical specifications:

Material: iron.



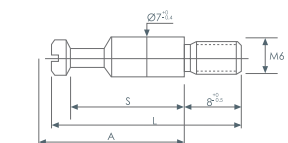
Code	Size
CF1007-A	A-24, S-20, L-34
CF1007-B	A-34, S-30, L-44

CF1008



Technical specifications:

Material: iron.



Code	Size
CF1008-A	A-24, S-20, L-32
CF1008-B	A-34, S-30, L-41



Parts Series

# CONNECTING BOLT

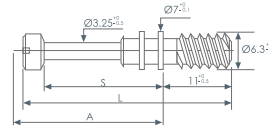
CF1009/ CF1010/ CF1011/ CF1012

CF1009



Technical specifications:

Material: iron



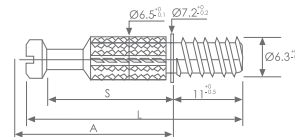
Code	Size
CF1009-A	A-24, S-20, L-34
CF1009-B	A-34, S-30, L-44

CF1010



Technical specifications:

Material: iron.



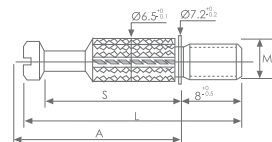
Code	Size
CF1010-A	A-24, S-20, L-34
CF1010-B	A-34, S-30, L-44

CF1011



Technical specifications:

Material: iron.



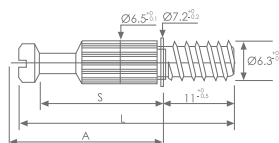
Code	Size
CF1011-A	A-24, S-20, L-34
CF1011-B	A-34, S-30, L-41

CF1012



Technical specifications:

Material: iron.



Code	Size
CF1012-A	A-24, S-20, L-34
CF1012-B	A-34, S-30, L-44



Parts Series

# CONNECTING BOLT

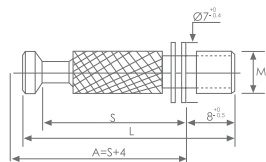
**CF1017/ CF1018/ CF1019/ CF1020**

CF1017



Technical specifications:

Material: iron



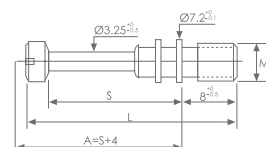
Code	Size
CF1017-A	A-24, S-20, L-32
CF1017-B	A-34, S-30, L-41

CF1018



Technical specifications:

Material: iron.



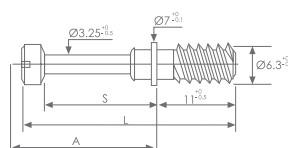
Code	Size
CF1018-A	A-24, S-20, L-32
CF1018-B	A-34, S-30, L-41

CF1019



Technical specifications:

Material: iron.



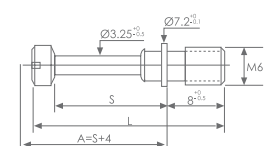
Code	Size
CF1019-A	A-24, S-20, L-34
CF1019-B	A-34, S-30, L-44

CF1020



Technical specifications:

Material: iron.



Code	Size
CF1020-A	A-24, S-20, L-32
CF1020-B	A-34, S-30, L-41



Parts Series

# CONNECTING BOLT

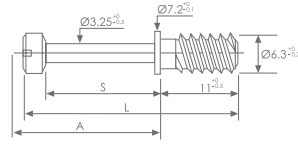
CF1021/ CF1022/ CF1023/ CF1024

CF1021



Technical specifications:

Material: iron.



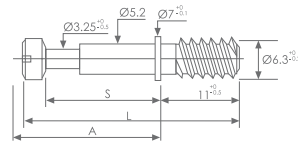
Code	Size
CF1021-A	A-24, S-20, L-34
CF1021-B	A-34, S-30, L-44

CF1022



Technical specifications:

Material: iron.



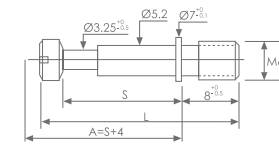
Code	Size
CF1022-A	A-24, S-20, L-34
CF1022-B	A-34, S-30, L-44

CF1023



Technical specifications:

Material: iron.



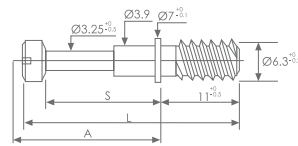
Code	Size
CF1023-A	A-24, S-20, L-32
CF1023-B	A-34, S-30, L-41

CF1024



Technical specifications:

Material: iron.



Code	Size
CF1024-A	A-24, S-20, L-34
CF1024-B	A-34, S-30, L-44

# CONNECTING BOLT

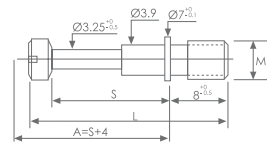
**CF1025/ CF1026/ CF1030/ CF1031**

CF1025



Technical specifications:

Material: iron



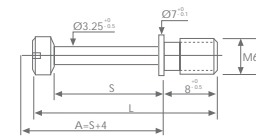
Code	Size
CF1025-A	A-24, S-20, L-32
CF1025-B	A-34, S-30, L-41

CF1026



Technical specifications:

Material: iron.



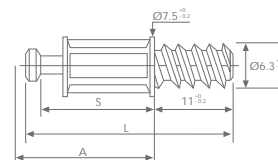
Code	Size
CF1026-A	A-24, S-20, L-32
CF1026-B	A-34, S-30, L-41

CF1030



Technical specifications:

Material: iron+plastic



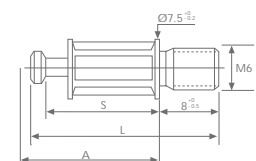
Code	Size
CF1030-A	A-24, S-20, L-34
CF1030-B	A-34, S-30, L-44

CF1031



Technical specifications:

Material: iron+plastic



Code	Size
CF1031-A	A-24, S-20, L-32
CF1031-B	A-34, S-30, L-41



# CONNECTING BOLT

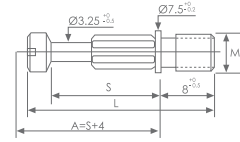
CF1033/ CF1034/ CF1035/ CF1036

CF1033



Technical specifications:

Material: iron+plastic



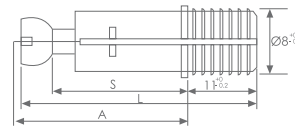
Code	Size
CF1033-A	A-24, S-20, L-32
CF1033-B	A-34, S-30, L-41

CF1034



Technical specifications:

Material: iron+plastic.



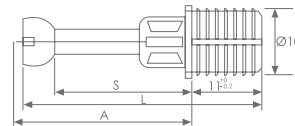
Code	Size
CF1034-A	A-24, S-18, L-34
CF1034-B	A-34, S-28, L-44

CF1035



Technical specifications:

Material: iron+plastic



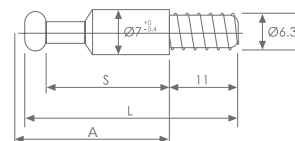
Code	Size
CF1035-A	A-24, S-18, L-34
CF1035-B	A-34, S-28, L-44

CF1036



Technical specifications:

Material: iron.



Code	Size
CF1036-A	A-24, S-15, L-29.5
CF1036-B	A-34, S-25, L-39.5



# CONNECTING BOLT

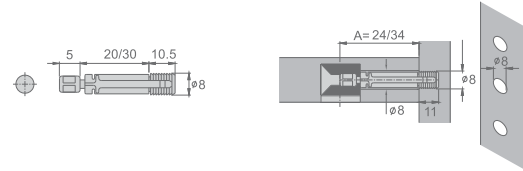


CF1045/ CF1046/ CF1048/ CF1049

CF1045



Technical specifications:  
Material: iron+plastic

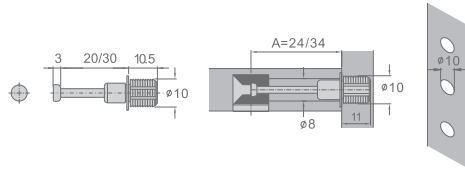


Code	Size
CF1045-A	A-24, S-20, L-35.5
CF1045-B	A-34, S-30, L-45.5

CF1046



Technical specifications:  
Material: iron+plastic



Code	Size
CF1046-A	A-24, S-20, L-37
CF1046-B	A-34, S-30, L-47



Parts Series

CF1048



Technical specifications:  
Material: iron+plastic

Code	Size
CF1048-A	A-24, S-20, L-35.5
CF1048-B	A-34, S-30, L-45.5

CF1049



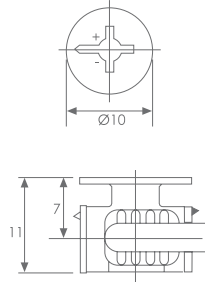
Technical specifications:  
Material: iron+plastic

Code	Size
CF1049-A	A-24, S-20, L-35.5
CF1049-B	A-34, S-30, L-45.5

# CAM

## PJ1011-01/ PJ1210-02/ PJ1210-03/ PJ1210-04

PJ1011-01

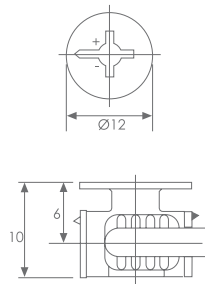


**Technical specifications:**

Thickness: 14mm  
 Depth: 10.5mm  
 Locking pos: 6mm

Size mm	Color
As graph	bule-zinc
	white-zinc
	black-zinc
	nickel

PJ1210-02

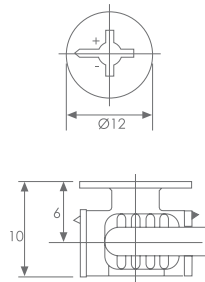


**Technical specifications:**

Thickness: 12mm  
 Depth: 10.5mm  
 Locking pos: 6mm

Size mm	Color
As graph	bule-zinc
	white-zinc
	black-zinc
	nickel

PJ1210-03

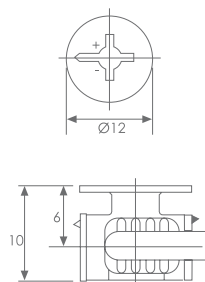


**Technical specifications:**

Thickness: 12mm  
 Depth: 10.5mm  
 Locking pos: 6mm

Size mm	Color
As graph	bule-zinc
	white-zinc
	black-zinc
	nickel

PJ1210-04



**Technical specifications:**

Thickness: 12mm  
 Depth: 10.5mm  
 Locking pos: 6mm

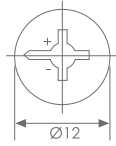
Size mm	Color
As graph	bule-zinc
	white-zinc
	black-zinc
	nickel



Parts Series

PJ1210-05/ PJ1501-01/ PJ1510-03/ PJ1511-01

PJ1210-05

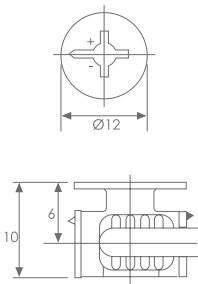


Technical specifications:

Thickness: 12mm  
 Depth: 10.5mm  
 Locking pos: 6mm

Size mm	Color
As graph	bule-zinc
	white-zinc
	black-zinc
	nickel

PJ1501-01

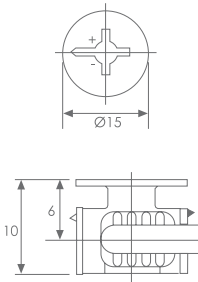


Technical specifications:

Thickness: 12mm  
 Depth: 10.5mm  
 Locking pos: 6mm

Size mm	Color
As graph	bule-zinc
	white-zinc
	black-zinc
	nickel

PJ1510-03

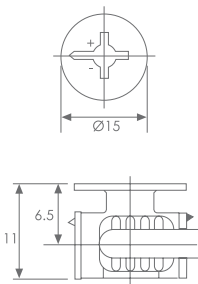


Technical specifications:

Thickness: 12mm  
 Depth: 10.5mm  
 Locking pos: 6mm

Size mm	Color
As graph	bule-zinc
	white-zinc
	black-zinc
	nickel

PJ1511-01



Technical specifications:

Thickness: 13mm  
 Depth: 11.5mm  
 Locking pos: 6mm

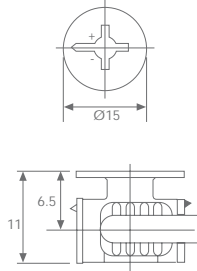
Size mm	Color
As graph	bule-zinc
	white-zinc
	black-zinc
	nickel



# CAM

## PJ1511-02/ PJ1512-01/ PJ1512-02/ PJ1512-03

PJ1511-02

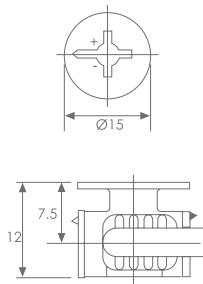


### Technical specifications:

Thickness: 13mm  
 Depth: 11.5mm  
 Locking pos: 6mm

Size mm	Color
As graph	bule-zinc
	white-zinc
	black-zinc
	nickel

PJ1512-01

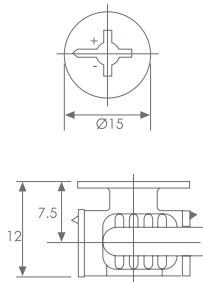


### Technical specifications:

Thickness: 15mm  
 Depth: 12.5mm  
 Locking pos: 7.5mm

Size mm	Color
As graph	bule-zinc
	white-zinc
	black-zinc
	nickel

PJ1512-02

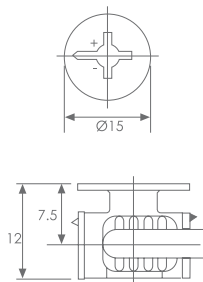


### Technical specifications:

Thickness: 15mm  
 Depth: 12.5mm  
 Locking pos: 7.5mm

Size mm	Color
As graph	bule-zinc
	white-zinc
	black-zinc
	nickel

PJ1512-03



### Technical specifications:

Thickness: 15mm  
 Depth: 12.5mm  
 Locking pos: 7.5mm

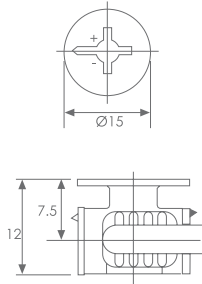
Size mm	Color
As graph	bule-zinc
	white-zinc
	black-zinc
	nickel



Parts Series

PJ1512-04/ PJ1512-05/ PJ1512-06/ PJ1512-07

PJ1512-04

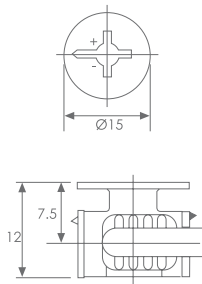


Technical specifications:

Thickness: 15mm  
 Depth: 12.5mm  
 Locking pos: 7.5mm

Size mm	Color
As graph	bule-zinc
	white-zinc
	black-zinc
	nickel

PJ1512-05

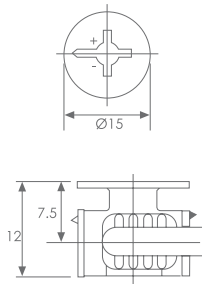


Technical specifications:

Thickness: 15mm  
 Depth: 12.5mm  
 Locking pos: 7.5mm

Size mm	Color
As graph	bule-zinc
	white-zinc
	black-zinc
	nickel

PJ1512-06

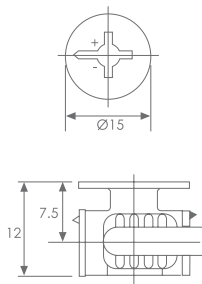


Technical specifications:

Thickness: 15mm  
 Depth: 12.5mm  
 Locking pos: 7.5mm

Size mm	Color
As graph	bule-zinc
	white-zinc
	black-zinc
	nickel

PJ1512-07



Technical specifications:

Thickness: 15mm  
 Depth: 12.5mm  
 Locking pos: 7.5mm

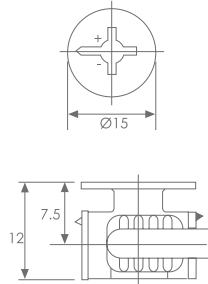
Size mm	Color
As graph	bule-zinc
	white-zinc
	black-zinc
	nickel



# CAM

## PJ1512-08/ PJ1512-09/ PJ1513-01/ PJ1513-02

PJ1512-08

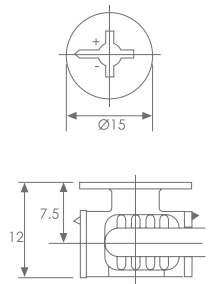


**Technical specifications:**

Thickness: 15mm  
 Depth: 12.5mm  
 Locking pos: 7.5mm

Size mm	Color
As graph	bule-zinc
	white-zinc
	black-zinc
	nickel

PJ1512-09

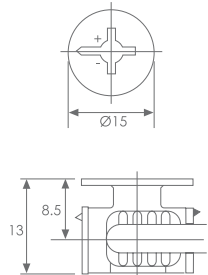


**Technical specifications:**

Thickness: 15mm  
 Depth: 12.5mm  
 Locking pos: 7.5mm

Size mm	Color
As graph	bule-zinc
	white-zinc
	black-zinc
	nickel

PJ1513-01

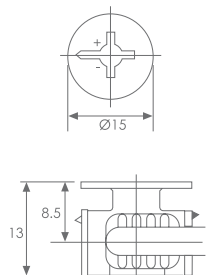


**Technical specifications:**

Thickness: 17mm  
 Depth: 13.5mm  
 Locking pos: 8.5mm

Size mm	Color
As graph	bule-zinc
	white-zinc
	black-zinc
	nickel

PJ1513-02



**Technical specifications:**

Thickness: 17mm  
 Depth: 13.5mm  
 Locking pos: 8.5mm

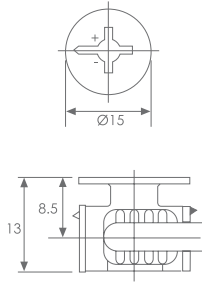
Size mm	Color
As graph	bule-zinc
	white-zinc
	black-zinc
	nickel



Parts Series

PJ1513-03/ PJ1513-04/ PJ1513-05/ PJ1513-06

PJ1513-03

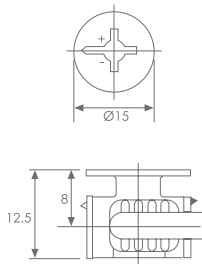


Technical specifications:

Thickness: 17mm  
 Depth: 13.5mm  
 Locking pos: 8.5mm

Size mm	Color
As graph	bule-zinc
	white-zinc
	black-zinc
	nickel

PJ1513-04

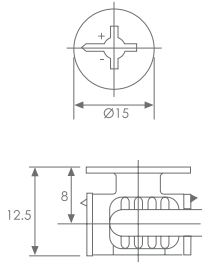


Technical specifications:

Thickness: 16mm  
 Depth: 13mm  
 Locking pos: 8mm

Size mm	Color
As graph	bule-zinc
	white-zinc
	black-zinc
	nickel

PJ1513-05

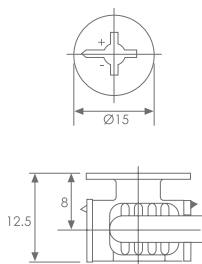


Technical specifications:

Thickness: 16mm  
 Depth: 13mm  
 Locking pos: 8mm

Size mm	Color
As graph	bule-zinc
	white-zinc
	black-zinc
	nickel

PJ1513-06



Technical specifications:

Thickness: 16mm  
 Depth: 13mm  
 Locking pos: 8mm

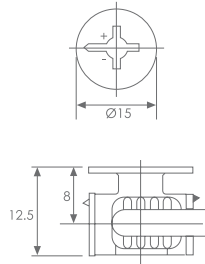
Size mm	Color
As graph	bule-zinc
	white-zinc
	black-zinc
	nickel



# CAM

## PJ1513-07/ PJ1520-01/ PJ1514-01/ PJ1514-02

PJ1513-07

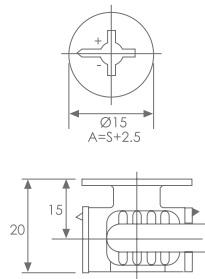


### Technical specifications:

Thickness: 16mm  
 Depth: 13mm  
 Locking pos: 8mm

Size mm	Color
As graph	bule-zinc
	white-zinc
	black-zinc
	nickel

PJ1520-01

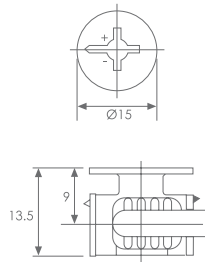
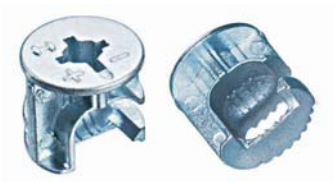


### Technical specifications:

Thickness: 30mm  
 Depth: 20.5mm  
 Locking pos: 15mm

Size mm	Color
As graph	bule-zinc
	white-zinc
	black-zinc
	nickel

PJ1514-01

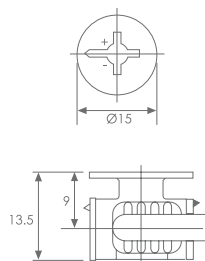


### Technical specifications:

Thickness: 19mm  
 Depth: 14.5mm  
 Locking pos: 9.5mm

Size mm	Color
As graph	bule-zinc
	white-zinc
	black-zinc
	nickel

PJ1514-02



### Technical specifications:

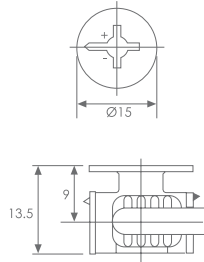
Thickness: 19mm  
 Depth: 14.5mm  
 Locking pos: 9.5mm

Size mm	Color
As graph	bule-zinc
	white-zinc
	black-zinc
	nickel



PJ1514-03/ PJ1514-04/ PJ1514-05/ PJ1517-01

PJ1514-03

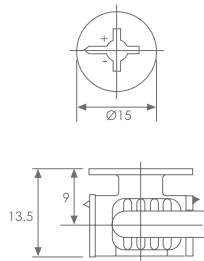


Technical specifications:

Thickness: 19mm  
 Depth: 14.5mm  
 Locking pos: 9.5mm

Size mm	Color
As graph	bule-zinc
	white-zinc
	black-zinc
	nickel

PJ1514-04

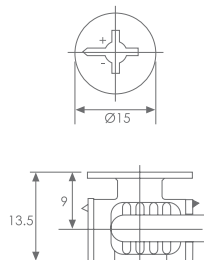


Technical specifications:

Thickness: 19mm  
 Depth: 14.5mm  
 Locking pos: 9.5mm

Size mm	Color
As graph	bule-zinc
	white-zinc
	black-zinc
	nickel

PJ1514-05

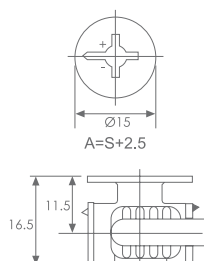


Technical specifications:

Thickness: 18mm  
 Depth: 14mm  
 Locking pos: 9mm

Size mm	Color
As graph	bule-zinc
	white-zinc
	black-zinc
	nickel

PJ1517-01



Technical specifications:

Thickness: 23mm  
 Depth: 17mm  
 Locking pos: 11.5mm

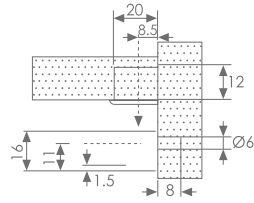
Size mm	Color
As graph	bule-zinc
	white-zinc
	black-zinc
	nickel



# CAM

## PT2012-01/ PT2012-02/ PT2012-03/ PT2012-04

PT2012-01



Technical specifications:

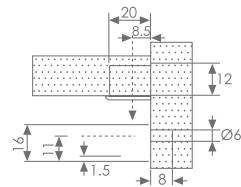
Thickness: 16mm  
 Depth: 12mm  
 Locking pos: 8.5mm

Size mm	Color
As graph	bule-zinc
	white-zinc
	black-zinc
	nickel



Parts Series

PT2012-02

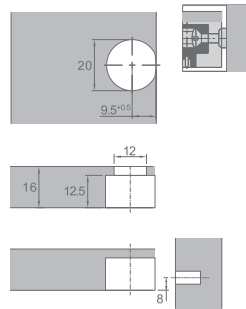


Technical specifications:

Thickness: 16mm  
 Depth: 12mm  
 Locking pos: 8.5mm

Size mm	Color
As graph	bule-zinc
	white-zinc
	black-zinc
	nickel

PT2012-03

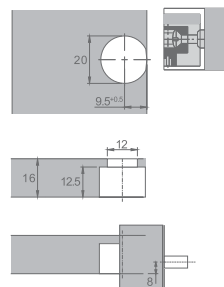


Technical specifications:

Thickness: 16mm  
 Depth: 13mm  
 Locking pos: 8mm

Size mm	Color
As graph	bule-zinc
	white-zinc
	black-zinc
	nickel

PT2012-04



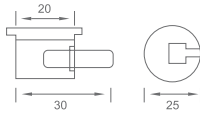
Technical specifications:

Thickness: 30mm  
 Depth: 20.5mm  
 Locking pos: 15mm

Size mm	Color
As graph	bule-zinc
	white-zinc
	black-zinc
	nickel

PT2012-05/ PT1813-01/ PT1813-02

PT2012-05

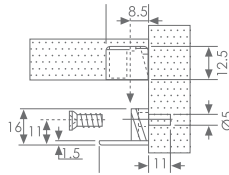


Technical specifications:

Thickness: 16mm  
 Depth: 13mm  
 Locking pos: 8mm

Size mm	Color
As graph	coffee

PT1813-01



Technical specifications:

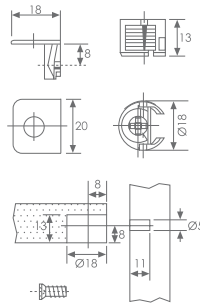
Material: zinc alloy, plastic

Size mm	Color
As graph	zinc



Parts Series

PT1813-02



Technical specifications:

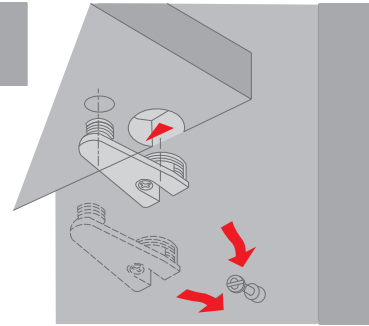
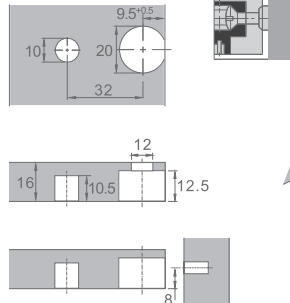
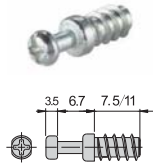
Material: zinc alloy, plastic

Size mm	Color
As graph	zinc

# CONNECTING BOLT

PT2013-01/ PT2013-02/ PT2013-03/ PT2013-04

## PT2013-01



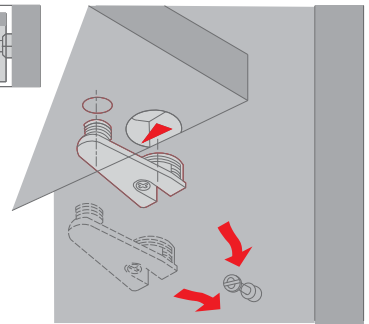
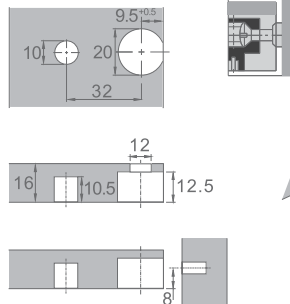
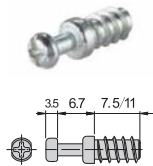
Technical specifications:

Material: zinc alloy

Finish: nickel plated

Size mm	Color
20*32	zinc

## PT2013-02



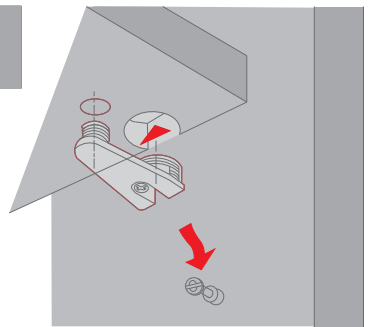
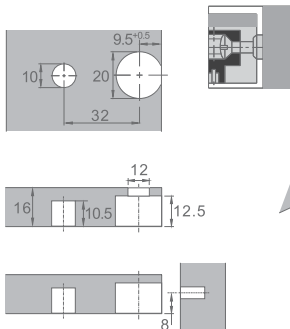
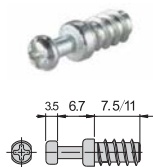
Technical specifications:

Material: zinc alloy + plastic

Color: white

Size mm	Color
20*32	zinc

## PT2013-03



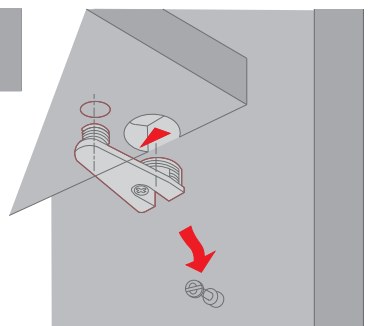
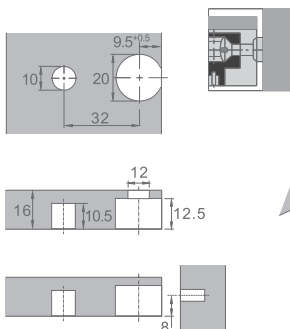
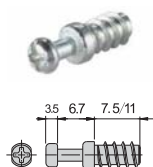
Technical specifications:

Material: zinc alloy + plastic

Color: white

Size mm	Color
20*32	zinc

## PT2013-04



Technical specifications:

Material: zinc alloy

Finish: nickel plated

Size mm	Color
20*32	zinc



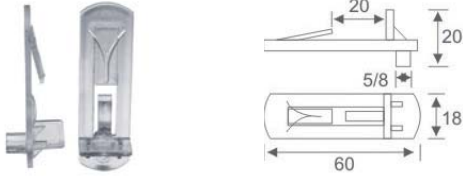
Parts Series

# SHELF SUPPORT SERIES

**MEATON**

PD4050/ PT4060/ PT4070/ PT4080

PD4050

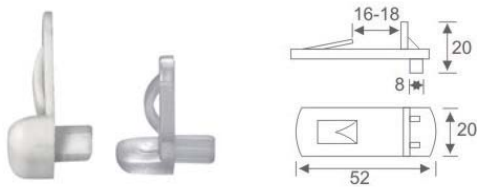


Technical specifications:

Material: plastic

Size mm	Color
As graph	white
	transparent

PD4060

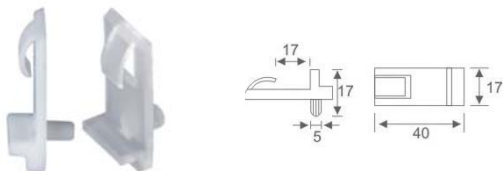


Technical specifications:

Material: plastic

Size mm	Color
As graph	white
	transparent

PD4070

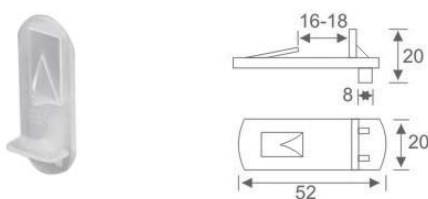


Technical specifications:

Material: plastic

Size mm	Color
As graph	white
	transparent

PD4080



Technical specifications:

Material: plastic

Size mm	Color
As graph	white
	transparent

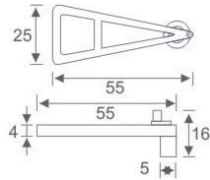


Parts Series

# SHELF SUPPORT SERIES

PD4090/ PD4100/ PD4110/ PD4120

PD4090



Technical specifications:

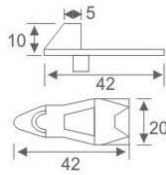
Material: plastic

Size mm	Color
As graph	white
	cream-colored



Parts Series

PD4100

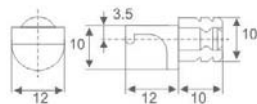


Technical specifications:

Material: plastic

Size mm	Color
As graph	white
	cream-colored

PD4110

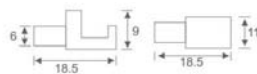
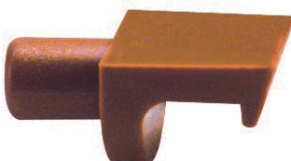


Technical specifications:

Material: plastic

Size mm	Color
As graph	white
	coffee
	black

PD4120



Technical specifications:

Material: plastic

Size mm	Color
As graph	coffee

# SHELF SUPPORT SERIES

**MEATON**

PD4230/ PD4250/ PD4260/ PD4270

PD4230

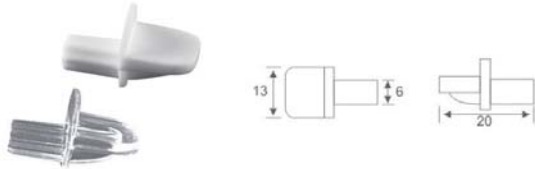


Technical specifications:

Material: plastic

Size mm	Color
As graph	white
	cream-colored

PD4250



Technical specifications:

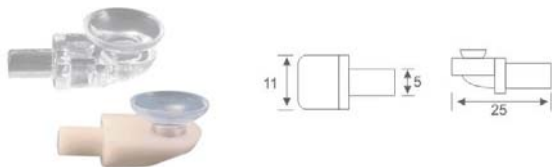
Material: plastic

Size mm	Color
As graph	white
	transparent



Parts Series

PD4260

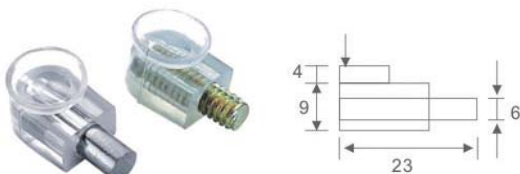


Technical specifications:

Material: plastic

Size mm	Color
As graph	white
	cream-colored
	transparent

PD4270



Technical specifications:

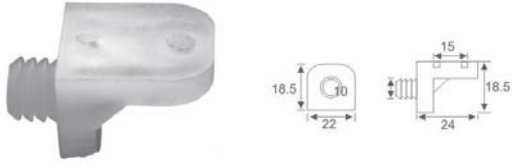
Material: plastic & iron

Size mm	Color
As graph	white
	coffee
	black
	gray

# SHELF SUPPORT SERIES

PD4280/ PD4290/ PD4300/ PD4310

PD4280



Technical specifications:

Material: plastic

Size mm	Color
As graph	white
	transparent



Parts Series

PD4290

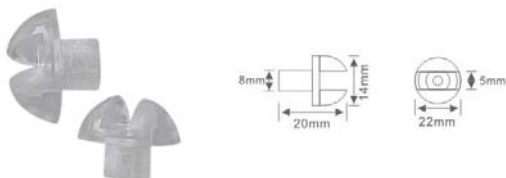


Technical specifications:

Material: plastic

Size mm	Color
As graph	cream-colored
	coffee

PD4300

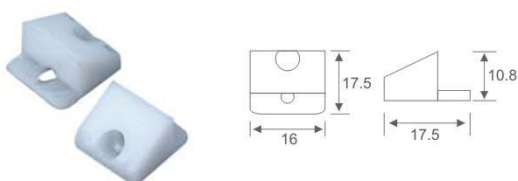


Technical specifications:

Material: plastic

Size mm	Color
As graph	transparent

PD4310



Technical specifications:

Material: plastic

Size mm	Color
As graph	white
	transparent

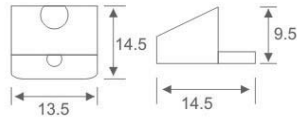


# SHELF SUPPORT SERIES

**MEATON**

PD4320/ PD4330/ PD4340/ PD4350

PD4320

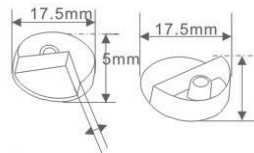


Technical specifications:

Material: plastic

Size mm	Color
As graph	white
	transparent

PD4330



Technical specifications:

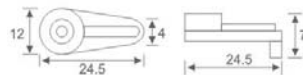
Material: plastic

Size mm	Color
As graph	white



Parts Series

PD4340

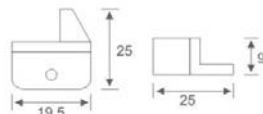


Technical specifications:

Material: plastic

Size mm	Color
As graph	coffee
	transparent

PD4350



Technical specifications:

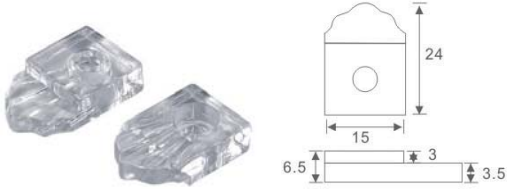
Material: plastic

Size mm	Color
As graph	white
	cream-colored

# SHELF SUPPORT SERIES

PD4360/ PD4410/ PD4420/ PD4430

PD4360



Technical specifications:

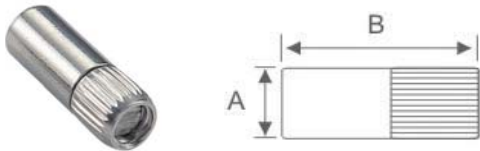
Material: plastic

Size mm	Color
As graph	transparent



Parts Series

PD4410

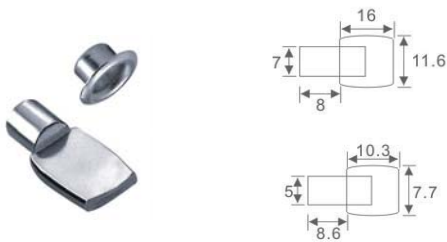


Technical specifications:

Material: iron

Size mm	Color
As graph	nickel

PD4420

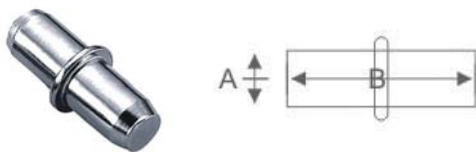


Technical specifications:

Material: iron

Size mm	Color
As graph	nickel

PD4430



Technical specifications:

Material: iron

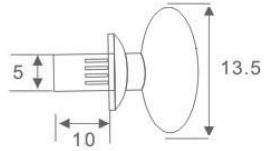
Size mm	Color
As graph	nickel.zinc

# SHELF SUPPORT SERIES

**MEATON**

PD4440/ PD4450/ PD4460/ PD4470

PD4440

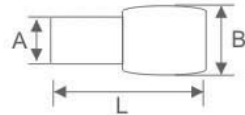


Technical specifications:

Material: plastic, zinc alloy

Size mm	Color
As graph	black
	transparent

PD4450



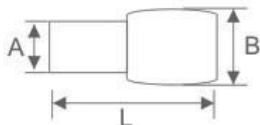
Technical specifications:

Material: iron

Size mm	Color
As graph	nickel

Parts Series

PD4460

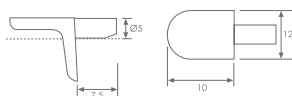


Technical specifications:

Material: plastic

Size mm	Color
As graph	coffee

PD4470



Technical specifications:

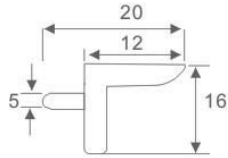
Material: zinc alloy

Size mm	Color
As graph	nickel

# SHELF SUPPORT SERIES

PD4500/ PD4510/ PD4520/ PD4530

PD4500



Technical specifications:

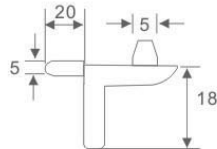
Material: zinc alloy

Size mm	Color
As graph	nickel



Parts Series

PD4510

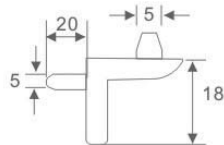


Technical specifications:

Material: zinc alloy

Size mm	Color
As graph	nickel

PD4520

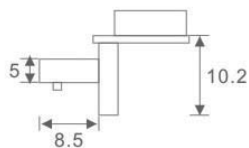


Technical specifications:

Material: zinc alloy

Size mm	Color
As graph	nickel

PD4530



Technical specifications:

Material: zinc alloy

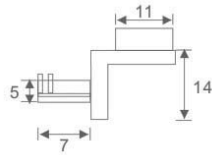
Size mm	Color
As graph	nickel

# SHELF SUPPORT SERIES

**MEATON**

PD4540/ PD4550/ PD4560/ PD4561

PD4540

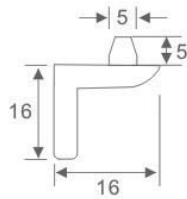


Technical specifications:

Material: zinc alloy

Size mm	Color
As graph	nickel

PD4550



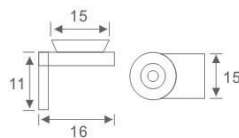
Technical specifications:

Material: zinc alloy

Size mm	Color
As graph	nickel

**M**  
Parts Series

PD4560

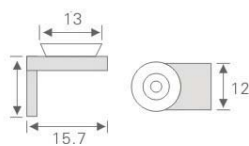


Technical specifications:

Material: zinc alloy

Size mm	Color
As graph	nickel

PD4561



Technical specifications:

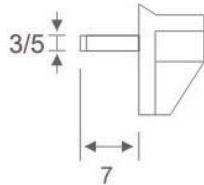
Material: iron

Size mm	Color
As graph	nickel

# SHELF SUPPORT SERIES

PD5010/ PD5060/ PD5070/ PD5080

PD5010



Technical specifications:

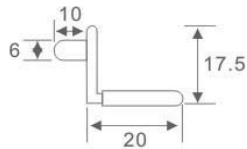
Material: plastic

Size mm	Color
	white
As graph	cream-colored
	transparent



Parts Series

PD5060

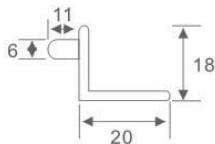


Technical specifications:

Material: plastic, zinc alloy

Size mm	Color
As graph	bronze

PD5070

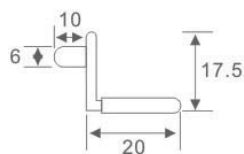


Technical specifications:

Material: zinc alloy

Size mm	Color
As graph	gold

PD5080



Technical specifications:

Material: plastic, zinc alloy

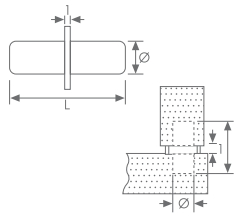
Size mm	Color
As graph	bronze

# SHELF SUPPORT SERIES

**MEATON**

**PD5120**

PD5120



Technical specifications:

Material: iron

Size mm	Color
As graph	coffee



Parts Series

# GLASS CLIP SERIES

KS8905-S/ M/ L/ T



Technical specifications:

The complete set includes:

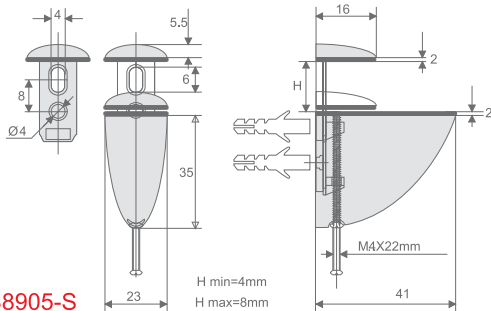
Screw M3.5 x 20mm - 2 pieces

Plastic dowels - 2 pieces



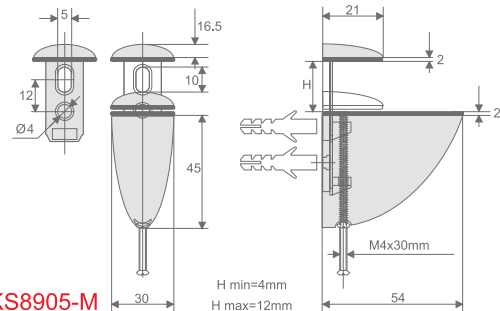
Size	Code	Color
S/M/L	Gold Plate	
	Chrome Plate	
	Satin Chrome	
	Satin Nickel	

Parts Series



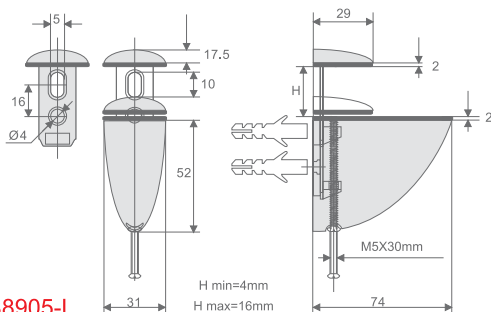
KS8905-S

Size mm	Color
H=4-8	Gold Plated
	Chrome Plated
	Satin Chrome
	Satin Nickel
	Antique Brass



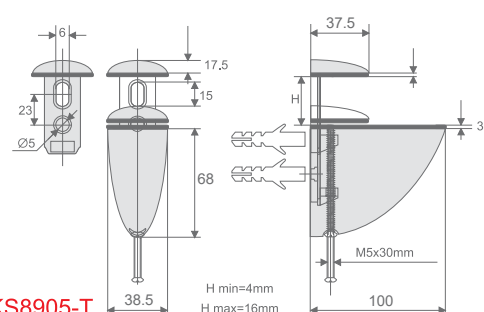
KS8905-M

Size mm	Color
H=4-12	Gold Plated
	Chrome Plated
	Satin Chrome
	Satin Nickel
	Antique Brass



KS8905-L

Size mm	Color
H=4-16	Gold Plated
	Chrome Plated
	Satin Chrome
	Satin Nickel
	Antique Brass



KS8905-T

Size mm	Color
H=4-16	Gold Plated
	Chrome Plated
	Satin Chrome
	Satin Nickel
	Antique Brass

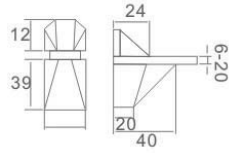


# GLASS CLIP SERIES



KS4850/ KS4860/ KS4920/ KS4930

KS4850

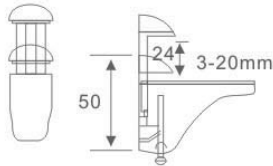


Technical specifications:

Material: zinc alloy

Size mm	Color
H=6-20	Gold Plated
	Chrome Plated
	Satin Chrome
	Satin Nickel

KS4860

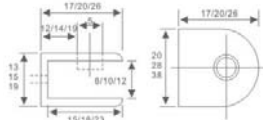


Technical specifications:

Material: zinc alloy

Size mm	Color
H=3-20	Gold Plated
	Chrome Plated
	Satin Chrome
	Satin Nickel

KS4920

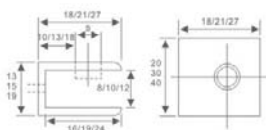


Technical specifications:

Material: aluminium alloy

Color	Size mm
Satin Chrome	H=8
	H=10
	H=12

KS4930



Technical specifications:

Material: aluminium alloy

Color	Size mm
Satin Chrome	H=8
	H=10
	H=12

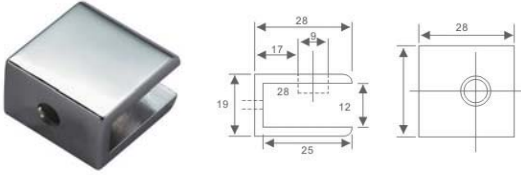


Parts Series

# GLASS CLIP SERIES

KS4940/ KS4980/ KS4810/ KS4820

KS4940



Technical specifications:

Material: zinc alloy

Size mm	Color
H=12	Chrome Plated
	Brushed Nickel



Parts Series

KS4980

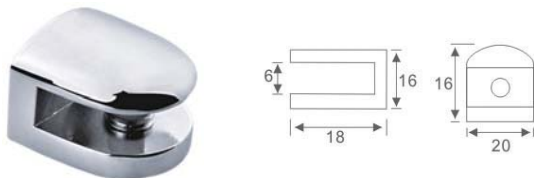


Technical specifications:

Material: zinc alloy

Size mm	Color
H=8	Chrome Plated
	Brushed Nickel
H=10	Chrome Plated
	Brushed Nickel
H=12	Chrome Plated
	Brushed Nickel

KS4810

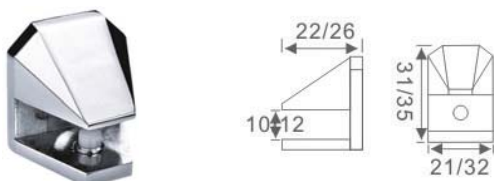


Technical specifications:

Material: zinc alloy

Size mm	Color
H=6	Gold Plated
	Chrome Plated
	Brushed Nickel

KS4820



Technical specifications:

Material: zinc alloy

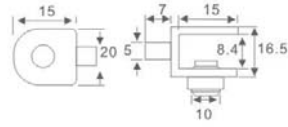
Size mm	Color
H=10	Gold Plated
	Chrome Plated
	Brushed Nickel
H=12	Gold Plated
	Chrome Plated
	Brushed Nickel

# GLASS CLIP SERIES



**KS4730/ KS4740/ KS4750/ KS4760**

**KS4730**

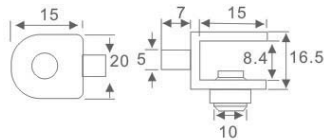


Technical specifications:

Material: zinc alloy

Size mm	Color
H=8.4	Gold Plated
	Chrome Plated
	Nickel Plated

**KS4740**

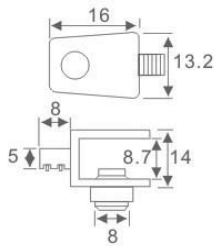


Technical specifications:

Material: zinc alloy

Size mm	Color
H=8.4	Gold Plated
	Chrome Plated
	Nickel Plated

**KS4750**

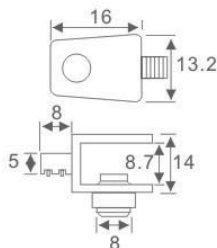


Technical specifications:

Material: zinc alloy

Size mm	Color
H=8.7	Gold Plated
	Chrome Plated
	Nickel Plated

**KS4760**



Technical specifications:

Material: zinc alloy

Size mm	Color
H=8.7	Gold Plated
	Chrome Plated
	Nickel Plated



Parts Series

# CASTOR SERIES

## XH(XS)0001/ XH(XS)0002/ XH(XS)0008-T/ XH(XS)0008-P

### XH0001/ XS0001

Unit: mm



Model	Diameter	Plate size	Screw size	Cylinder size
XH0001	35	42 x 42 x 2	M8 x 15	∅ 11 x 22
	50	42 x 42 x 2	M8 x 15	∅ 11 x 22
	60	60 x 60 x 2	M10 x 15	∅ 11 x 22
	75	60 x 60 x 2	M10 x 15	∅ 11 x 22
	100	60 x 60 x 2	M10 x 15	∅ 11 x 22
XS0001	35	42 x 42 x 2	M8 x 15	∅ 11 x 22
	50	42 x 42 x 2	M8 x 15	∅ 11 x 22
	60	60 x 60 x 2	M10 x 15	∅ 11 x 22
	75	60 x 60 x 2	M10 x 15	∅ 11 x 22
	100	60 x 60 x 2	M10 x 15	∅ 11 x 22

Load capacity: 40kg/ 50kg/ 60kg/ 80kg/ 95kg

### XH0002/ XS0002

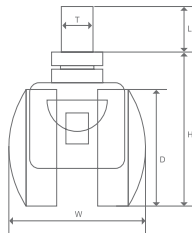
Unit: mm



Model	Diameter	Plate size	Screw size	Cylinder size
XH0002	50	42 x 42 x 2	M8 x 15	∅ 11 x 22
	60	60 x 60 x 2	M10 x 15	∅ 11 x 22
	75	60 x 60 x 2	M10 x 15	∅ 11 x 22
	100	60 x 60 x 2	M10 x 15	∅ 11 x 22
XS0002	50	42 x 42 x 2	M8 x 15	∅ 11 x 22
	60	60 x 60 x 2	M10 x 15	∅ 11 x 22
	75	60 x 60 x 2	M10 x 15	∅ 11 x 22
	100	60 x 60 x 2	M10 x 15	∅ 11 x 22

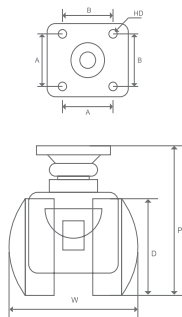
Load capacity: 50kg/ 60kg/ 80kg/ 95kg

### XH0008-T/ XS0008-T



Model	D x W (mm)	T x L (mm)
XH0008-T30	30 x 32	6 x 12
XH0008-T40	40 x 40	8 x 15
XH0008-T50	50 x 45	(M8 M10) x 15
XH0008-T60	60 x 50	M10 x 19
XS0008-T30	30 x 32	6 x 12
XS0008-T40	40 x 40	8 x 15
XS0008-T50	50 x 45	(M8 M10) x 15
XS0008-T60	60 x 50	M10 x 19

### XH0008-P/ XS0008-P



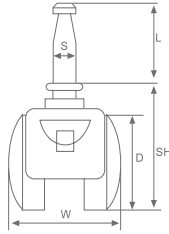
Model	D x W (mm)	T x L (mm)
XH0008-P30	30 x 32	38 x 38 x 1.2
XH0008-P40	40 x 40	38 x 38 x 1.2
XH0008-P50	50 x 45	38 x 38 x 1.2
XH0008-P60	60 x 50	38 x 38 x 1.5
XS0008-P30	30 x 32	38 x 38 x 1.2
XS0008-P40	40 x 40	38 x 38 x 1.5
XS0008-P50	50 x 45	38 x 38 x 1.5
XS0008-P60	60 x 50	38 x 38 x 1.5

# CASTOR SERIES



## XH(XS)0008-S/ XH(XS)0008-U/ XH(XS)0008-L/ XH(XS)0008-F

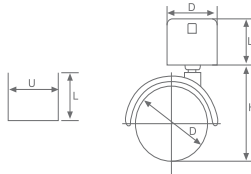
### XH0008-S/ XS0008-S



Unit: mm

Model	D x W	T x L
XH0008-S30	30 x 32	6 x 22
XH0008-S40	40 x 40	7.6 x 38
XH0008-S50	50 x 45	7.6 x 38
XH0008-S60	60 x 50	7.6 x 38
XS0008-S30	30 x 32	6 x 22
XS0008-S40	40 x 40	7.6 x 38
XS0008-S50	50 x 45	7.6 x 38
XS0008-S60	60 x 50	7.6 x 38

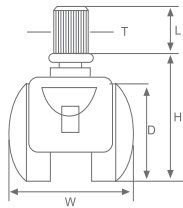
### XH0008-U/ XS0008-U



Unit: mm

Model	D x W	T x L
XH0008-U30	30 x 32	35 x 35 x 17
XH0008-U40	40 x 40	35 x 35 x 17
XH0008-U50	50 x 45	35 x 35 x 19
XH0008-U60	60 x 50	35 x 35 x 26
XS0008-U30	30 x 32	35 x 35 x 17
XS0008-U40	40 x 40	35 x 35 x 17
XS0008-U50	50 x 45	40 x 33 x 18.5
XS0008-U60	60 x 50	35 x 35 x 26

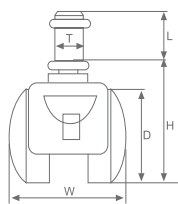
### XH0008-L/ XS0008-L



Unit: mm

Model	D x W	T x L
XH0008-L30	30 x 32	8 x 19
XH0008-L40	40 x 40	8 x 19
XH0008-L50	50 x 45	8 x 19
XH0008-L60	60 x 50	8 x 19
XS0008-L30	30 x 32	8 x 19
XS0008-L40	40 x 40	8 x 19
XS0008-L50	50 x 45	8 x 19
XS0008-L60	60 x 50	11 x 22

### XH0008-F/ XS0008-F



Unit: mm

Model	D x W	T x L
XH0008-F30	30 x 32	6 x 22
XH0008-F40	40 x 40	8 x 17
XH0008-F50	50 x 45	8 x 19
XH0008-F60	60 x 50	11 x 22
XS0008-F30	30 x 32	6 x 22
XS0008-F40	40 x 40	8 x 17
XS0008-F50	50 x 45	8 x 19
XS0008-F60	60 x 50	11 x 22



Parts Series

# Table leg series

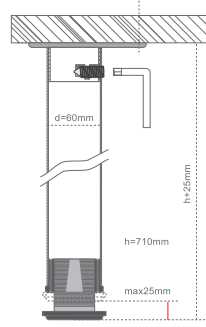
YZ0010



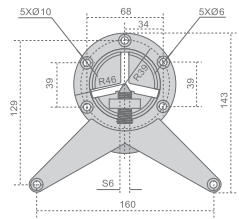
Technical specifications:

Material: iron, stainless steel

Thickness: 0.8mm, 1.0mm



V steel base  
Item: t110n



Unit: mm

Diameter	Height	Color
50	710	Chrome Plated
	820	Chrome Plated
	1100	Chrome Plated
60	710	Chrome Plated
	820	Chrome Plated
	1100	Chrome Plated

Available mounting plate □



Quincuncial steel base



Triangle alloy base



V-shape steel plate



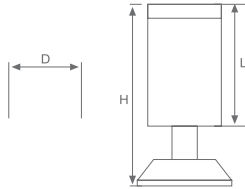
V-shape alloy plate



# FURNITURE LEG

YZ0200/ YZ0201/ YZ0204/ YZ0205

YZ0200



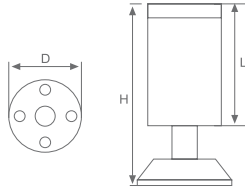
Technical specifications:

Material: aluminium + zinc

Unit: mm

Diameter	Height	Color
50	80	Chrome Plated
	80	Anodized Satine Chrome
	100	Chrome Plated
	100	Anodized Satine Chrome
	120	Chrome Plated
	120	Anodized Satine Chrome
150	150	Chrome Plated
	150	Anodized Satine Chrome

YZ0201



Technical specifications:

Material: aluminium + zinc

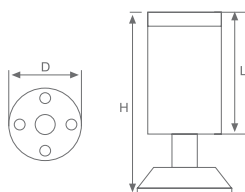
Unit: mm

Diameter	Height	Color
32	80	Chrome Plated
	80	Anodized Satine Chrome
	100	Chrome Plated
	100	Anodized Satine Chrome
50	80	Chrome Plated
	80	Anodized Satine Chrome
	100	Chrome Plated
	100	Anodized Satine Chrome



Parts Series

YZ0204



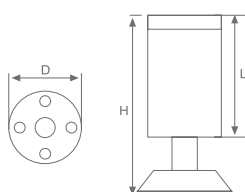
Technical specifications:

Material: aluminium + zinc

Unit: mm

Diameter	Height	Color
32	80	Chrome Plated
	80	Anodized Satine Chrome
	100	Chrome Plated
	100	Anodized Satine Chrome
50	80	Chrome Plated
	80	Anodized Satine Chrome
	100	Chrome Plated
	100	Anodized Satine Chrome

YZ0205



Technical specifications:

Material: aluminium + zinc

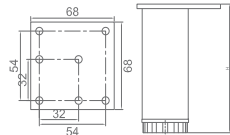
Unit: mm

Diameter	Height	Color
32	80	Chrome Plated
	80	Anodized Satine Chrome
	100	Chrome Plated
	100	Anodized Satine Chrome
50	80	Chrome Plated
	80	Anodized Satine Chrome
	100	Chrome Plated
	100	Anodized Satine Chrome

# FURNITURE LEG

YZ0118/ YZ0121/ YZ0106/ YZ0110

YZ0118



Technical specifications:

Material: aluminium

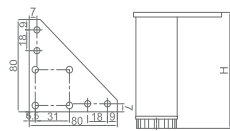
Unit: mm

Diameter	Height	Color
38 x 38	60	Anodized Satine Chrome
	80	Anodized Satine Chrome
	100	Anodized Satine Chrome
	120	Anodized Satine Chrome



Parts Series

YZ0121



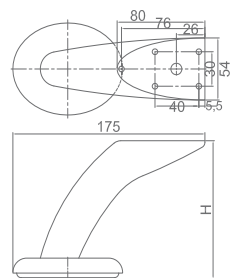
Technical specifications:

Material: aluminium

Unit: mm

Diameter	Height	Color
38 x 38	60	Anodized Satine Chrome
	80	Anodized Satine Chrome
	100	Anodized Satine Chrome
	120	Anodized Satine Chrome

YZ0106



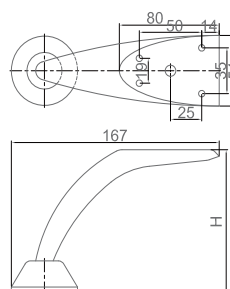
Technical specifications:

Material: iron

Unit: mm

Thick	Height	Color
1.0	120	Chrome Plated
1.2	120	Chrome Plated

YZ0110



Technical specifications:

Material: iron

Unit: mm

Thick	Height	Color
1.0	100	Chrome Plated
1.2	100	Chrome Plated
1.5	10	Chrome Plated
1.0	120	Chrome Plated
1.2	120	Chrome Plated
1.5	120	Chrome Plated

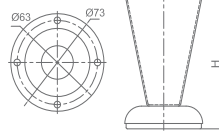


# FURNITURE LEG

**MEATON**

YZ0170/ YZ0606/ YZ0230/ YZ0302

YZ0170



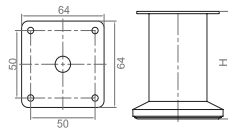
Technical specifications:

Material: iron

Unit: mm

Diameter	Height	Color
60	102	Chrome Plated

YZ0606



Technical specifications:

Material: iron

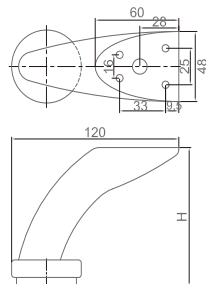
Unit: mm

Diameter	High	Color
45	60	Chrome Plated
	80	Brushed Nickel
	100	Chrome Plated
	120	Brushed Nickel



Parts Series

YZ0230



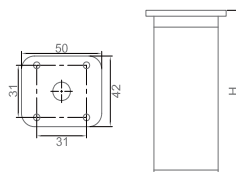
Technical specifications:

Material: iron

Unit: mm

Thick	Height	Color
1.0	90	Chrome Plated
1.2	90	Chrome Plated
1.0	100	Chrome Plated
1.2	100	Chrome Plated
1.5	100	Chrome Plated

YZ0302



Technical specifications:

Material: aluminium, plastic

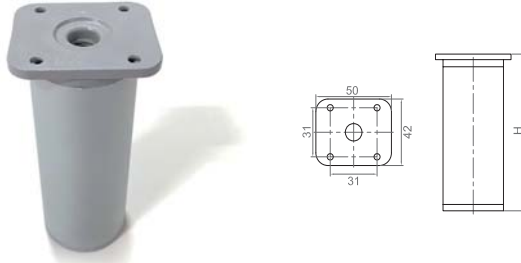
Unit: mm

Diameter	Height	Color
40	60	Anodized Chrome
	80	Anodized Chrome
	100	Anodized Chrome
	120	Anodized Chrome

# FURNITURE LEG

YZ0309/ YZ0511/ YZ0106/ YZ1008

YZ0309



Technical specifications:

Material: aluminium+plastic

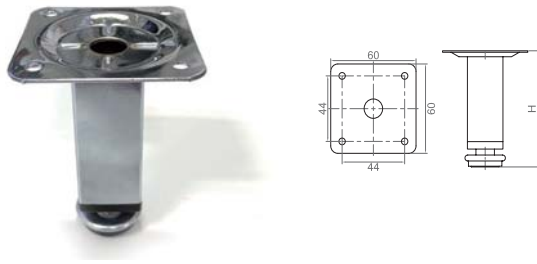
Unit: mm

Diameter	Height	Color
40	60	Anodized Chrome
	80	Anodized Chrome
	100	Anodized Chrome
	120	Anodized Chrome



Parts Series

YZ0511



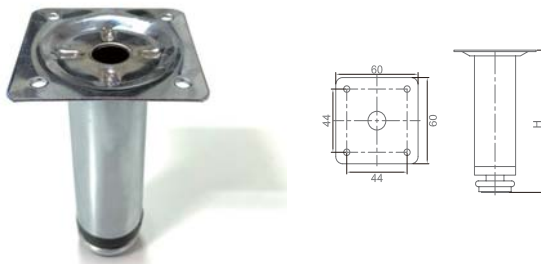
Technical specifications:

Material: iron

Unit: mm

Diameter	Height	Color
25	60	Chrome Plated
	80	Chrome Plated
	100	Chrome Plated
	120	Chrome Plated

YZ0510



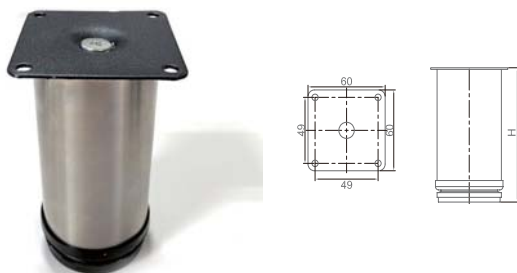
Technical specifications:

Material: iron

Unit: mm

Diameter	Height	Color
30	60	Chrome Plated
	80	Chrome Plated
	100	Chrome Plated
	120	Chrome Plated

YZ1008



Technical specifications:

Material: iron

Unit: mm

Diameter	Height	Color
50	50	Chrome Plated
	60	Chrome Plated
	80	Chrome Plated
	100	Chrome Plated
	120	Chrome Plated
	150	Chrome Plated

Material: stainless steel

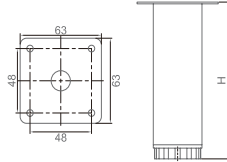
Diameter	Height	Color
50	50	Chrome Plated
	60	Chrome Plated
	80	Chrome Plated
	100	Chrome Plated
	120	Chrome Plated
	150	Chrome Plated

# FURNITURE LEG



YZ0657/ YZ0659/ YZ0607

YZ0657



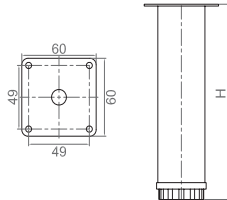
Technical specifications:

Material: stainless steel

Unit: mm

Diameter	Height	Color
50	60	Chrome Plated
	80	Chrome Plated
	100	Chrome Plated
	120	Chrome Plated

YZ0659



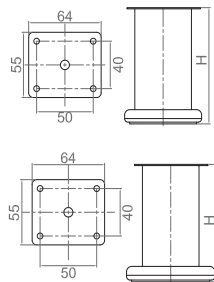
Technical specifications:

Material: stainless steel

Unit: mm

Diameter	Height	Color
38	60	Chrome Plated
	80	Chrome Plated
	100	Chrome Plated
	120	Chrome Plated

YZ0607



Technical specifications:

Material: iron

Unit: mm

Diameter	Height	Color
45	50	Chrome Plated
	60	Chrome Plated
	80	Chrome Plated
	100	Chrome Plated
	120	Chrome Plated
47	50	Chrome Plated
	60	Chrome Plated
	80	Chrome Plated
	100	Chrome Plated
50	120	Chrome Plated
	50	Chrome Plated
	60	Chrome Plated
	80	Chrome Plated
50	80	Chrome Plated
	100	Chrome Plated
	120	Chrome Plated
	120	Chrome Plated



Parts Series

# FURNITURE LEG

YZ0612/ YZ0658/ YZ0651/ YZ0652

YZ0612



Technical specifications:

Material: iron/ stainless steel

Unit: mm

Diameter	Height	Color
50	80	Chrome Plated
	80	Brushed Nickel
	100	Chrome Plated
	100	Brushed Nickel



Parts Series

YZ0658



Technical specifications:

Material: iron

Unit: mm

Diameter	Height	Color
42	100	Chrome Plated
	100	Brushed Nickel
50	100	Chrome Plated
	100	Brushed Nickel

YZ0651



Technical specifications:

Material: ABS

Unit: mm

Diameter	Height	Color
50	50	Chrome Plated
	50	Satin Chrome
40	80	Chrome Plated
	80	Satin Chrome
	100	Chrome Plated
	100	Satin Chrome

YZ0652



Technical specifications:

Material: plastic

Unit: mm

Diameter	Height	Color
48	55	Black
43	49	Black
27	48	Black
17	48	Black

# FURNITURE LEG

**MEATON**

YZ0122/ YZ0202/ YZ0655/ YZ0660

YZ0122



Technical specifications:

Material: iron

Unit: mm

Diameter	Height	Color
/	80	Chrome Plated

YZ0202



Technical specifications:

Material: iron

Unit: mm

Diameter	High	Color
/	130	Chrome Plated

YZ0655



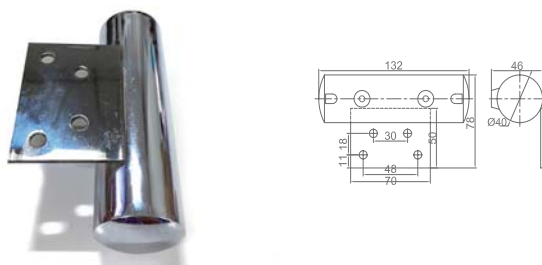
Technical specifications:

Material: plastic

Unit: mm

Diameter	Height	Color
45	45	Chrome Plated

YZ0660



Technical specifications:

Material: aluminium, zinc

Unit: mm

Diameter	Height	Color
40	80	Anodized Chrome
	80	Anodized Satine Chrome
	100	Anodized Chrome
	100	Anodized Satine Chrome



# ADJUSTABLE LEG

YC0001/ YZ0002/ YZ0003/ YZ0004

YC0001



Technical specifications:

Material: plastic & iron

Unit: mm

Diameter	Height	Color
8	35	Black
		Zinc

YC0002



Technical specifications:

Material: plastic & iron

Unit: mm

Diameter	Height	Color
6	28	Black
		Zinc

YC0003



Technical specifications:

Material: plastic & iron

Unit: mm

Diameter	Height	Color
6	28	Black
		Zinc

YC0004



Technical specifications:

Material: plastic & iron

Unit: mm

Diameter	Height	Color
6	23	Black
		Zinc

# ADJUSTABLE LEG

YC0009/ YZ0010/ YZ0011/ YZ0012

YC0009



**Technical specifications:**

Material: plastic & iron

Unit: mm

Diameter	Height	Color
10	40	Black
		Zinc

YC0010



**Technical specifications:**

Material: plastic & iron

Unit: mm

Diameter	Height	Color
8	34	Black
		Zinc

YC0011



**Technical specifications:**

Material: plastic & iron

Unit: mm

Diameter	Height	Color
10	34.5	Black
		Zinc

YC0012



**Technical specifications:**

Material: plastic & iron

Unit: mm

Diameter	Height	Color
8	34	Black
		Zinc



# ADJUSTABLE LEG

YC0901/ YZ0902/ YZ0905

YC0901



Technical specifications:

Material: PP

Unit: mm

Diameter	Height	Color
/	90-125	Black

YC0902



Technical specifications:

Material: PP/ ABS

Unit: mm

Diameter	Height	Color
/	95-125	Black
	120-190	Black
	100-170	Black
	120-150	Black
	145-175	Black

YC0905



Technical specifications:

Material: ABS

Unit: mm

Diameter	Height	Color
/	50-90	Black
	80-120	Black
	100-140	Black
	130-170	Black
	140-180	Black



Parts Series



# FOOT NAIL

YC3001/ YZ3002/ YZ3003/ YZ3004

YC3001



Technical specifications:

Material: plastic & iron

Unit: mm

Diameter	Height	Color
12	6	Black
		Zinc
15		Black
		Zinc
18		Black
		Zinc
21	Black	
	Zinc	

YC3002



Technical specifications:

Material: plastic & iron

Unit: mm

Diameter	Height	Color
21	/	Black
		Zinc
		Brown

YC3003



Technical specifications:

Material: plastic & iron

Unit: mm

Diameter	Height	Color
22	/	Black
		Zinc
		Brown

YC3004



Technical specifications:

Material: plastic & iron

Unit: mm

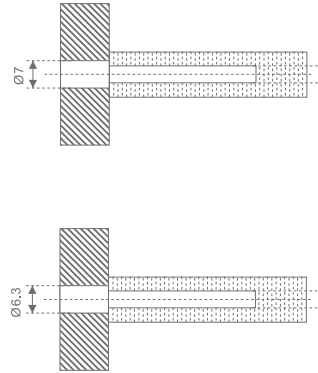
Diameter	Height	Color
17	7	Black
		Zinc
		Brown
20		Black
		Zinc
		Brown
28		Black
		Zinc
		Brown



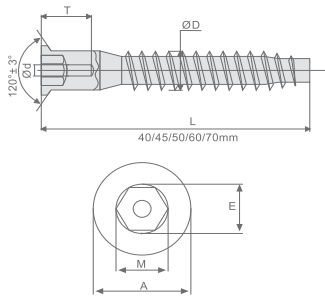
Parts Series

# SCREW & NUT SERIES

## FC5040/ FC5045/ FC5050/ FC6350/ FC7050

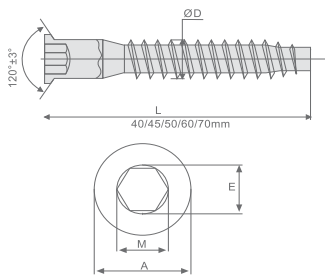


Parts Series



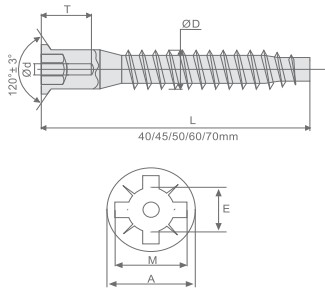
Unit: mm

Code	Size	Hole	Color
FC5040-A	D5.0 x L40	Hexagonal screw Deep hole	Zinc
FC5045-A	D5.0 x L45	Hexagonal screw Deep hole	Zinc
FC5050-A	D5.0 x L50	Hexagonal screw Deep hole	Zinc
FC6350-A	D6.3 x L50	Hexagonal screw Deep hole	Zinc
FC7050-A	D7.0 x L50	Hexagonal screw Deep hole	Zinc



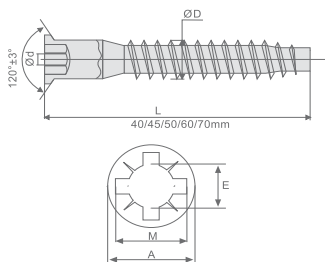
Unit: mm

Code	Size	Hole	Color
FC5040-B	D5.0 x L40	Hexagonal screw Shallow hole	Zinc
FC5045-B	D5.0 x L45	Hexagonal screw Shallow hole	Zinc
FC5050-B	D5.0 x L50	Hexagonal screw Shallow hole	Zinc
FC6350-B	D6.3 x L50	Hexagonal screw Shallow hole	Zinc
FC7050-B	D7.0 x L50	Hexagonal screw Shallow hole	Zinc



Unit: mm

Code	Size	Hole	Color
FC5040-C	D5.0 x L40	Pozi-slotted screw Deep hole	Zinc
FC5045-C	D5.0 x L45	Pozi-slotted screw Deep hole	Zinc
FC5050-C	D5.0 x L50	Pozi-slotted screw Deep hole	Zinc
FC6350-C	D6.3 x L50	Pozi-slotted screw Deep hole	Zinc
FC7050-C	D7.0 x L50	Pozi-slotted screw Deep hole	Zinc



Unit: mm

Code	Size	Hole	Color
FC5040-D	D5.0 x L40	Pozi-slotted screw Shallow hole	Zinc
FC5045-D	D5.0 x L45	Pozi-slotted screw Shallow hole	Zinc
FC5050-D	D5.0 x L50	Pozi-slotted screw Shallow hole	Zinc
FC6350-D	D6.3 x L50	Pozi-slotted screw Shallow hole	Zinc
FC7050-D	D7.0 x L50	Pozi-slotted screw Shallow hole	Zinc

# SCREW & NUT SERIES



FC0050/ FC0051/ FC0021/ FC0023

FC0050



Technical specifications:

Material: iron

Size: 3x16 ~ 6x130mm

Unit: mm

Length	Size	Color
16	3 x 16	Black zinc
16	3 x 16	Zinc
16	3 x 16	Yellow zinc
.....		
130	6 x 130	Black zinc
130	6 x 130	Zinc
130	6 x 130	Yellow zinc

FC0051



Technical specifications:

Material: iron

Size: 3x16 ~ 6x130mm

Unit: mm

Length	Size	Color
16	3 x 16	Black zinc
16	3 x 16	Zinc
16	3 x 16	Yellow zinc
.....		
130	6 x 130	Black zinc
130	6 x 130	Zinc
130	6 x 130	Yellow zinc

FC0021



Technical specifications:

Material: iron

Unit: mm

Length	Size	Color
13	6.3 x 13	Nickel

FC0023



Technical specifications:

Material: iron

Unit: mm

Length	Size	Color
11	6.3 x 11	Nickel
13	6.3 x 13	Nickel

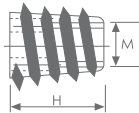


Parts Series

# FOOT NAIL

PM0001/ PM0002/ PM00053

PM0001



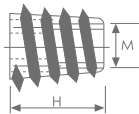
Technical specifications:

Material: zinc alloy

Unit: mm

Diameter	Size	Color
6.3	6.3 x 13	Blue zinc

PM0002



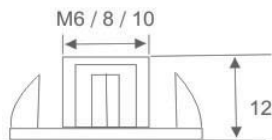
Technical specifications:

Material: iron

Unit: mm

Diameter	Size	Color
8	8 x 20	Color zinc

PM0005



Technical specifications:

Material: iron

Unit: mm

Diameter	Size	Color
6	6 x 12	Color zinc
8	8 x 12	Color zinc
10	10 x 12	Color zinc



Parts Series

## Finish



Chrome



Gold



Black



Antique brass

## Lock lingua



1)Zinc alloy  
2)Steel



SCREW  
(Optional)



L  
(Optional)

## Lock key



Round key

Brass(or steel)key

Square key

Fold key

Material of key

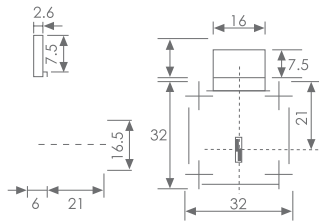
1)Brass  
2)Steel  
3)Zinc alloy



# FURNITURE LOCK SERIES

## NF0136/ NF0137/ NF0138/ NF0138-S

### NF0136



Technical specifications:

Material: zinc alloy

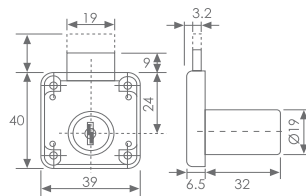
Unit: mm

Diameter	Length	Color
16.5	20	Chrome Plated
		Black



Parts Series

### NF0137



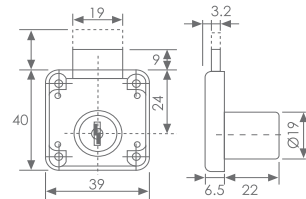
Technical specifications:

Material: zinc alloy

Unit: mm

Diameter	Length	Color
19	26	Chrome Plated
		Black
		Nickel Plated
		Antique brass

### NF0138



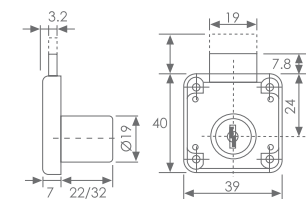
Technical specifications:

Material: zinc alloy

Unit: mm

Diameter	Length	Color
19	22	Chrome Plated
		Black
		Nickel Plated
		Antique brass
16	22	Chrome Plated
		Black
		Nickel Plated
		Antique brass

### NF0138-S



Technical specifications:

Material: iron

Unit: mm

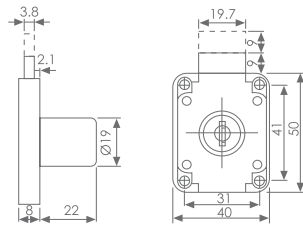
Diameter	Length	Color
19	22	Chrome Plated
		Nickel Plated

# FURNITURE LOCK SERIES



NF0139/ NF0105/ NF0106/ NF0109

## NF0139



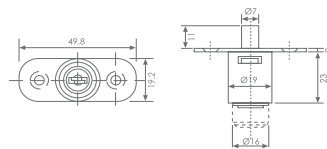
Technical specifications:

Material: zinc alloy

Unit: mm

Diameter	Length	Color
19	22	Chrome Plated
		Black
		Nickel Plated
	32	Antique brass
		Chrome Plated
		Black
		Nickel Plated
		Antique brass

## NF0105



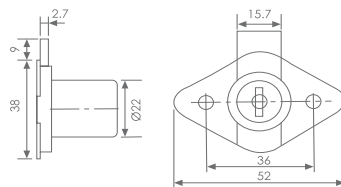
Technical specifications:

Material: zinc alloy

Unit: mm

Diameter	Length	Color
19	24	Chrome Plated
		Black
		Gold Plated

## NF0106



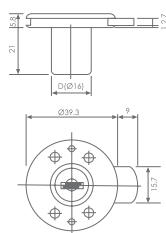
Technical specifications:

Material: zinc alloy

Unit: mm

Diameter	Length	Color
22	22	Chrome Plated
		Black
		Gold Plated
	24	Chrome Plated
		Black
		Gold Plated

## NF0109



Technical specifications:

Material: zinc alloy

Unit: mm

Diameter	Length	Color
19	22	Chrome Plated
		Black
		Gold Plated
16	22	Chrome Plated
		Black
		Gold Plated

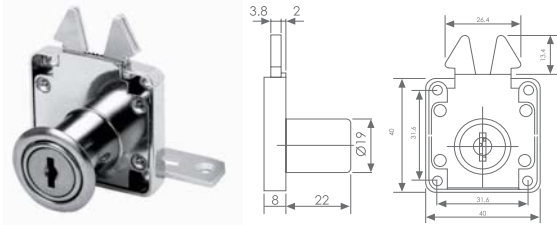


Parts Series

# FURNITURE LOCK SERIES

NF0202/ NF0338/ NF0408/ NF0239

## NF0202



Technical specifications:

Material: zinc alloy

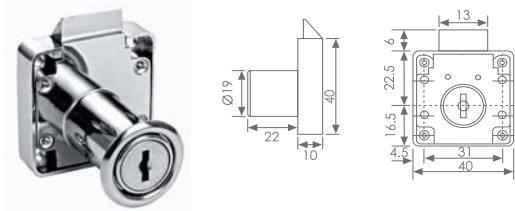
Unit: mm

Diameter	Length	Color
19	22	Chrome Plated
		Black
		Gold Plated



Parts Series

## NF0338



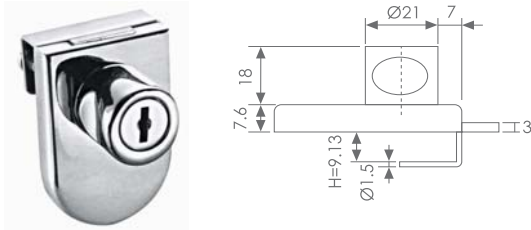
Technical specifications:

Material: zinc alloy

Unit: mm

Diameter	Length	Color
19	22	Chrome Plated
		Black
		Gold Plated
	26	Chrome Plated
		Black
		Gold Plated
	32	Chrome Plated
		Black
		Gold Plated

## NF0408



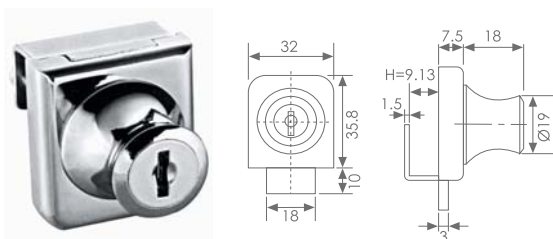
Technical specifications:

Material: zinc alloy

Unit: mm

Diameter	Length	Color
21	18	Chrome Plated
		Black
		Gold Plated

## NF0239



Technical specifications:

Material: zinc alloy

Unit: mm

Diameter	Length	Color
19	20	Chrome Plated
		Black
		Gold Plated

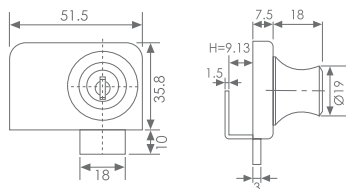


# FURNITURE LOCK SERIES



NF0258/ NF0308/ NF0318/ NF0328

## NF0258



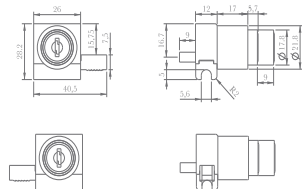
Technical specifications:

Material: zinc alloy

Unit: mm

Diameter	Length	Color
19	20	Chrome Plated
		Black
		Gold Plated

## NF0308



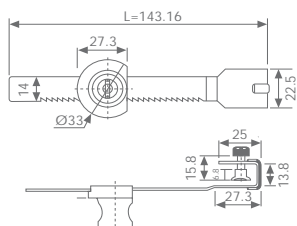
Technical specifications:

Material: zinc alloy

Unit: mm

Diameter	Length	Color
22	22	Chrome Plated
		Black
		Gold Plated

## NF0318



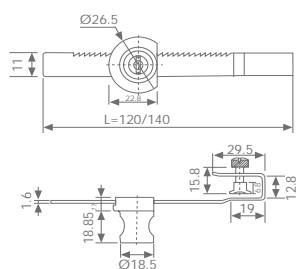
Technical specifications:

Material: zinc alloy

Unit: mm

Length	Size	Color
120	/	Chrome Plated
	/	Black
	/	Gold Plated
140	/	Chrome Plated
	/	Black
	/	Gold Plated

## NF0328



Technical specifications:

Material: zinc alloy

Unit: mm

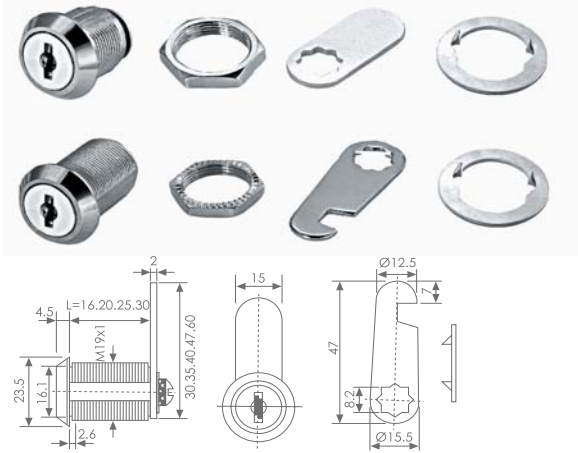
Length	Size	Color
120	/	Chrome Plated
	/	Black
	/	Gold Plated
140	/	Chrome Plated
	/	Black
	/	Gold Plated



# FURNITURE LOCK SERIES

NF0103/ NF0108/ NF0288

## NF0103



Technical specifications:

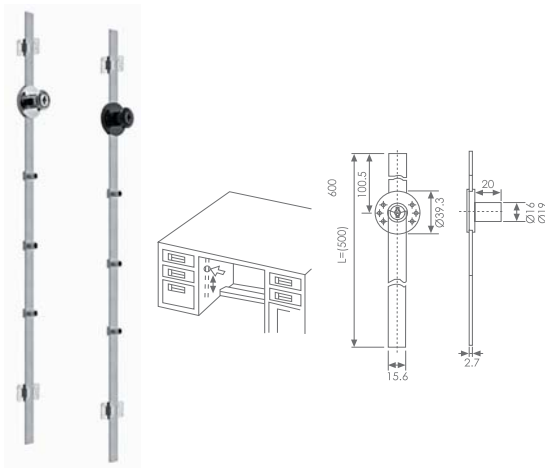
Material: zinc alloy

Unit: mm

Diameter	Length	Color
19	16	Chrome Plated
		Black
		Gold Plated
	20	Chrome Plated
		Black
		Gold Plated
25	Chrome Plated	
	Black	
	Gold Plated	
30	Chrome Plated	
	Black	
	Gold Plated	

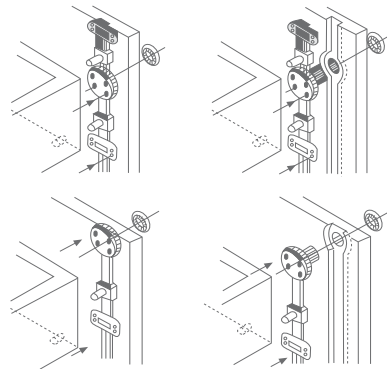
Parts Series

## NF0108

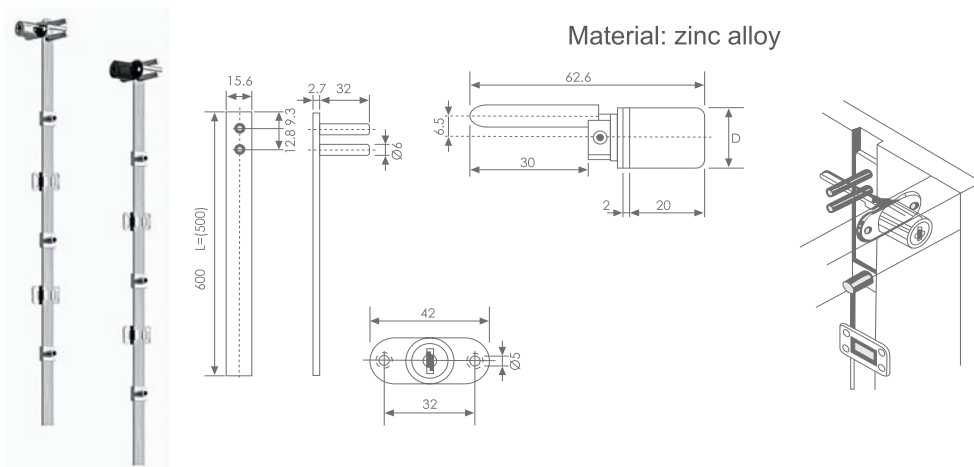


Technical specifications:

Material: zinc alloy



## NF0288



Technical specifications:

Material: zinc alloy

# TUBE SERIES



LR0016/ LR0019/ LR0025/ LR1530



LR0016

LR0019

LR0025

Technical specifications:

Material: iron  
Length: 3m

Unit: mm

Size	Thickness	Color
16	0.6	Chrome Plated
	0.7	Chrome Plated
	0.8	Chrome Plated
	0.9	Chrome Plated
	1.0	Chrome Plated
	1.1	Chrome Plated
	1.2	Chrome Plated
19	0.6	Chrome Plated
	0.7	Chrome Plated
	0.8	Chrome Plated
	0.9	Chrome Plated
	1.0	Chrome Plated
	1.1	Chrome Plated
	1.2	Chrome Plated
25	0.6	Chrome Plated
	0.7	Chrome Plated
	0.8	Chrome Plated
	0.9	Chrome Plated
	1.0	Chrome Plated
	1.1	Chrome Plated
	1.2	Chrome Plated



LR1530

Technical specifications:

Material: iron  
Length: 3m

Unit: mm

Size	Thickness	Color
15*30	0.4	Chrome Plated
	0.5	Chrome Plated
	0.6	Chrome Plated
	0.7	Chrome Plated
	0.8	Chrome Plated
	0.9	Chrome Plated
	1.0	Chrome Plated
	1.1	Chrome Plated
	1.2	Chrome Plated



Parts Series

# TUBE SERIES

LT0442/ LT0452/ LT0453/ LT0454

LT0442



Technical specifications:

Material: aluminum

Length: 3m, 6m

Unit: mm

Size	Thickness	Color
15 x 25 x 6	0.6	Chrome Plated
	0.7	Chrome Plated
	0.8	Chrome Plated
	0.9	Chrome Plated
	1.0	Chrome Plated
	1.1	Chrome Plated
	1.2	Chrome Plated



Parts Series

LT0452



Technical specifications:

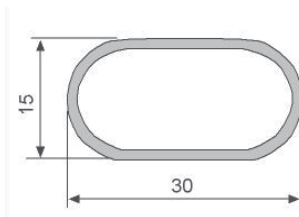
Material: aluminum

Length: 3m, 6m

Unit: mm

Size	Thickness	Color
15 x 30 x 6	0.6	Chrome Plated
	0.7	Chrome Plated
	0.8	Chrome Plated
	0.9	Chrome Plated
	1.0	Chrome Plated
	1.1	Chrome Plated
	1.2	Chrome Plated

LT0453



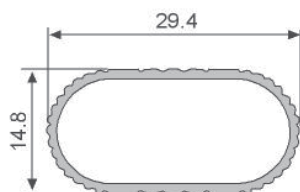
Technical specifications:

Material: aluminum

Unit: mm

Size	Thickness	Color
15 x 30	1.15	Chrome Plated

LT0454



Technical specifications:

Material: aluminum

Unit: mm

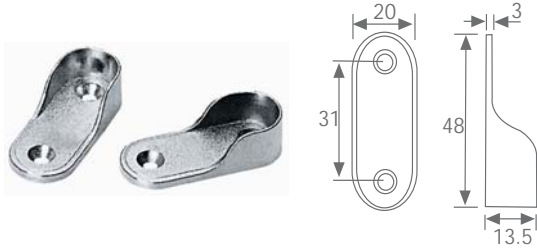
Size	Thickness	Color
14.8 x 29.4	1.0	Chrome Plated

# TUBE FLANGE SERIES



## LS1601/ LS1602/ LS1604

### LS1601



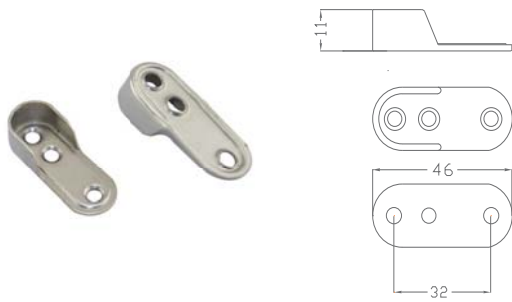
Technical specifications:

Material: zinc alloy

Unit: mm

Size	Length	Color
20 x 48	48	Nickel Plated

### LS1602



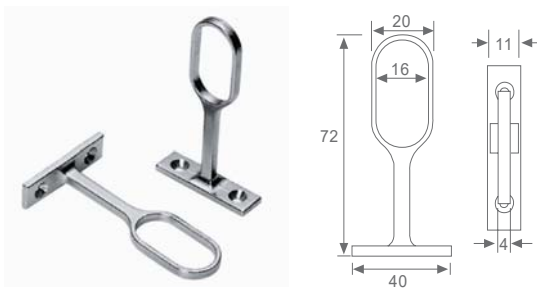
Technical specifications:

Material: iron

Unit: mm

Size	Length	Color
11 x 46	46	Nickel Plated
	46	Chrome Plated

### LS1604



Technical specifications:

Material: zinc alloy

Unit: mm

Size	Height	Color
40 x 72	72	Nickel Plated

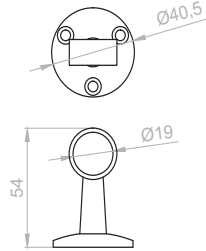


Parts Series

# TUBE FLANGE SERIES

LS1915-T/ LS1915-Q/ LS2515-T/ LS2515-Q

LS1915-T



Technical specifications:

Material: zinc alloy

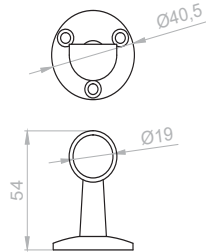
Unit: mm

Size	Length	Color
19	54	Chrome Plated



Parts Series

LS1915-Q



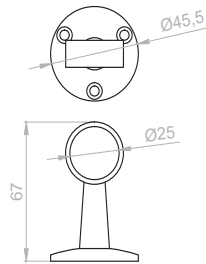
Technical specifications:

Material: zinc alloy

Unit: mm

Size	Length	Color
19	54	Chrome Plated

LS2515-T



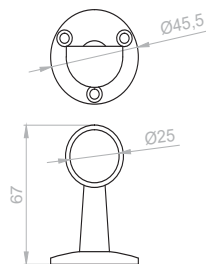
Technical specifications:

Material: zinc alloy

Unit: mm

Size	Length	Color
25	67	Chrome Plated

LS2515-Q



Technical specifications:

Material: zinc alloy

Unit: mm

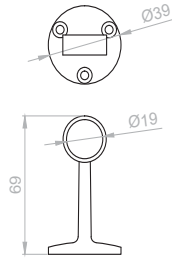
Size	Length	Color
25	67	Chrome Plated

# TUBE FLANGE SERIES



LS1916-T/ LS1916-Q/ LS2516-T/ LS2516-Q

## LS1916-T



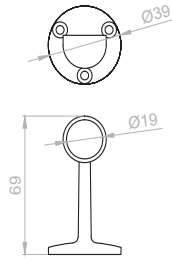
Technical specifications:

Material: zinc alloy

Unit: mm

Size	Length	Color
19	69	Chrome Plated

## LS1916-Q



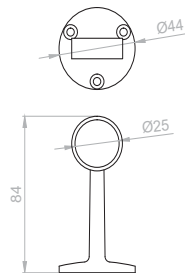
Technical specifications:

Material: zinc alloy

Unit: mm

Size	Length	Color
19	69	Chrome Plated

## LS2516-T



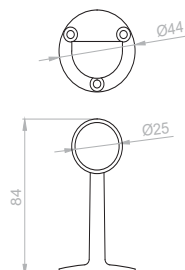
Technical specifications:

Material: zinc alloy

Unit: mm

Size	Length	Color
25	84	Chrome Plated

## LS2516-Q



Technical specifications:

Material: zinc alloy

Unit: mm

Size	Length	Color
25	84	Chrome Plated

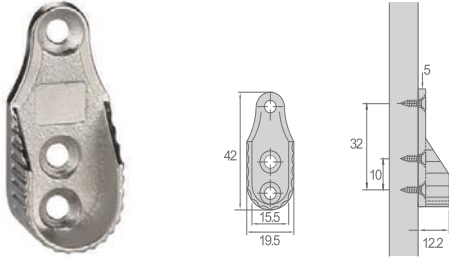


Parts Series

# TUBE FLANGE SERIES

LS1610/ LS1611/ LS1612/ LS1613

## LS1610



Technical specifications:

Material: zinc alloy

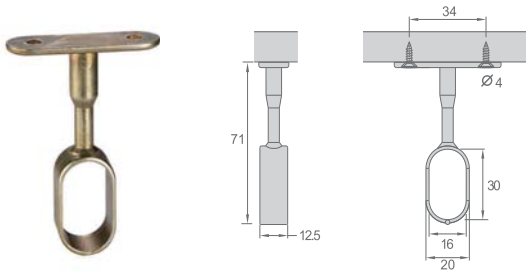
Unit: mm

Size	Length	Color
12.2	42	Nickel Plated
12.2	42	Gold Plated
12,2	42	Spray-painted



Parts Series

## LS1611



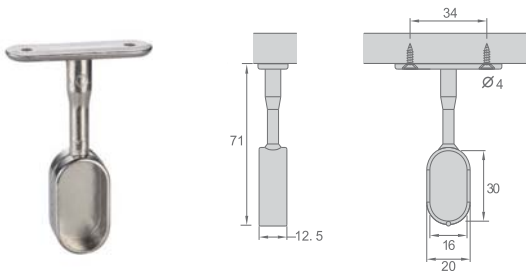
Technical specifications:

Material: zinc alloy

Unit: mm

Size	Length	Color
12.5	71	Nickel Plated
12.5	71	Gold Plated
12.5	71	Spray-painted

## LS1612



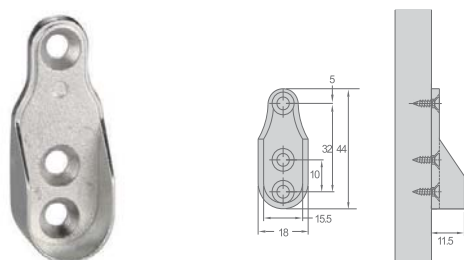
Technical specifications:

Material: zinc alloy

Unit: mm

Size	Length	Color
12.5	71	Nickel Plated
12.5	71	Gold Plated
12.5	71	Spray-painted

## LS1613



Technical specifications:

Material: zinc alloy

Unit: mm

Size	Length	Color
11.5	44	Nickel Plated
11.5	44	Gold Plated
11.5	44	Spray-painted

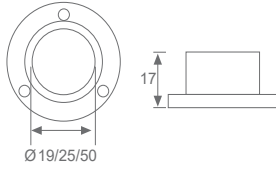


# TUBE FLANGE SERIES



## LS2502/ LS2503

### LS2502



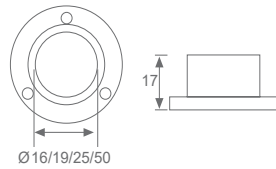
Technical specifications:

Material: zinc alloy

Unit: mm

Size	Diameter	Color
19 x 19	19	Chrome Plated
19 x 19	19	Brushed Nickel
25 x 25	25	Chrome Plated
25 x 25	25	Brushed Nickel
50 x 50	50	Chrome Plated
50 x 50	50	Brushed Nickel

### LS2503



Technical specifications:

Material: iron

Unit: mm

Size	Diameter	Color
16 x 16	16	Chrome Plated
19 x 19	19	Chrome Plated
25 x 25	25	Chrome Plated
50 x 50	50	Chrome Plated



Parts Series

# TUBE CONNECTOR

LS2508/ 2LS509/ LS2510/ LS2511/ LS2512



## LS2508

Technical specifications:

Material: zinc alloy

Unit: mm

Diameter	Length	Color
25	25	Chrome Plated



## LS2509

Technical specifications:

Material: zinc alloy

Unit: mm

Diameter	Length	Color
25	25	Chrome Plated



## LS2510

Technical specifications:

Material: zinc alloy

Unit: mm

Diameter	Length	Color
25	25	Chrome Plated



## LS2511

Technical specifications:

Material: zinc alloy

Unit: mm

Diameter	Length	Color
25	25	Chrome Plated



## LS2512

Technical specifications:

Material: zinc alloy

Unit: mm

Diameter	Length	Color
25	25	Chrome Plated



Parts Series

# TUBE FLANGE SERIES



LP1001/ LP1002/ LP1003/ LP1004

LP1001



Technical specifications:

Material: PE

Unit: mm

Code	Diameter	Color
LP1001-16	16	Black
LP1001-19	19	Black
LP1001-25	25	Black
LP1001-40	40	Black
LP1001-50	50	Black

LP1002



Technical specifications:

Material: PE

Unit: mm

Code	Diameter	Color
LP1002-25	25	Black



Parts Series

LP1003



Technical specifications:

Material: PE

Unit: mm

Code	Diameter	Color
LP1003-25	25	Black
LP1003-30	30	Black

LP1004



Technical specifications:

Material: PE

Unit: mm

Code	Length	Color
LP1004-1	20	Black
LP1004-2	25	Black
LP1004-3	25	Black
LP1004-4	25	Black
LP1004-5	24.5	Black
.....		
LP1004-59	200	Black

# HANGER & CORNER SERIES

AF0001/ AF0002/ AF0007/ AF0008

AF0001



Technical specifications:

Material: plastic & iron

Unit: mm

Height	Length	Color
/	/	White
/	/	Brown

AF0002



Technical specifications:

Material: plastic & iron

Unit: mm

Height	Length	Color
/	/	White
/	/	Brown

AF0007



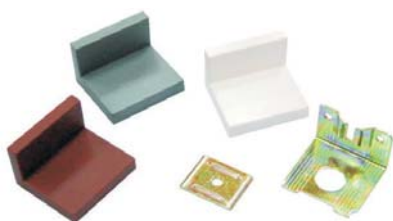
Technical specifications:

Material: plastic & iron

Unit: mm

Height	Length	Color
/	/	White
/	/	Brown

AF0008



Technical specifications:

Material: plastic & zinc alloy

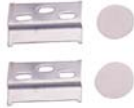
Unit: mm

Height	Length	Color
/	/	White
/	/	Gray

# HANGER & CORNER SERIES

## AF1001/ AF1002/ AF1003

### AF1001



Technical specifications:

Material: iron

Unit: mm

Height	Length	Color
/	/	Zinc

### AF1002



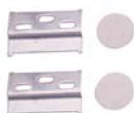
Technical specifications:

Material: iron

Unit: mm

Height	Length	Color
/	/	Zinc

### AF1003



Technical specifications:

Material: iron

Unit: mm

Height	Length	Color
/	/	Zinc



# HANGER & CORNER SERIES

WC0003/ WC0004/ WC0005/ WC0006

WC0003



Technical specifications:

Material: iron

Unit: mm

Thickness	Size	Color
3	40 x 40 x 40	Zinc



Parts Series

WC0004



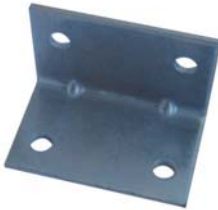
Technical specifications:

Material: iron

Unit: mm

Thickness	Size	Color
1.8	25 x 25 x 30	Zinc

WC0005



Technical specifications:

Material: iron

Unit: mm

Thickness	Size	Color
1.8	38 x 38 x 47	Zinc
	30 x 30 x 47	Zinc

WC0006



Technical specifications:

Material: iron

Unit: mm

Thickness	Size	Color
1	21 x 21 x 50	Zinc alloy

# HANGER & CORNER SERIES

**MEATON**

WC0007/ WC0008/ WC0010/ WC0011

WC0007



Technical specifications:

Material: iron

Unit: mm

Thickness	Size	Color
0.9	40 x 50	Zinc alloy

WC0008



Technical specifications:

Material: iron

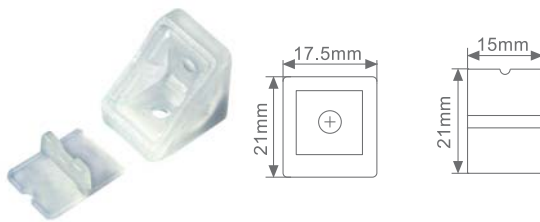
Unit: mm

Thickness	Size	Color
0.9	37 x 37	Zinc alloy



Parts Series

WC0010



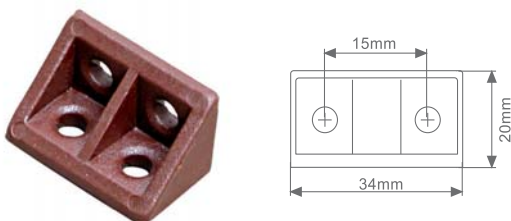
Technical specifications:

Material: plastic

Unit: mm

Height	Size	Color
/	21 x 17.5	Zinc alloy
	21 x 15	Zinc alloy

WC0011



Technical specifications:

Material: plastic

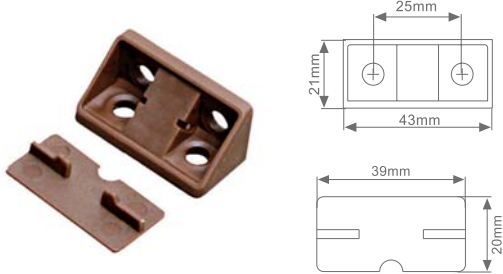
Unit: mm

Height	Size	Color
/	34 x 20	Zinc alloy

# HANGER & CORNER SERIES

WC0012/ WC0015/ WC0016/ WC0017

WC0012



Technical specifications:

Material: plastic

Unit: mm

Height	Size	Color
/	43 x 21	Zinc alloy
	39 x 20	Zinc alloy



Parts Series

WC0015



Technical specifications:

Material: iron

Unit: mm

Height	Size	Color
1.5	20 x 20 x 15	Zinc alloy
1.2	20 x 20 x 15	Zinc alloy
1.2	25 x 25 x 15	Zinc alloy
1.5	30 x 30 x 15	Zinc alloy
1.2	30 x 30 x 15	Zinc alloy
1	30 x 30 x 15	Zinc alloy
1.5	40 x 40 x 15	Zinc alloy

WC0016



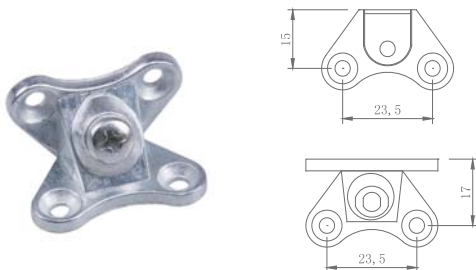
Technical specifications:

Material: plastic

Unit: mm

Height	Size	Color
/	44	White

WC0017



Technical specifications:

Material: iron

Unit: mm

Height	Size	Color
/	/	Zinc

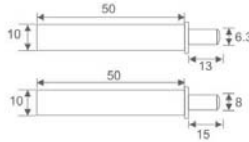


# HANGER & CORNER SERIES



CD1120/ CD1230/ CD1240/ CD1250

CD1120



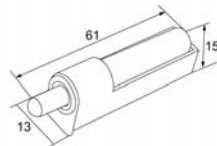
Technical specifications:

Material: ABS, POM

Unit: mm

Strength	Life	Color
7N	50,000	White
		Gray

CD1230



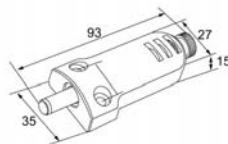
Technical specifications:

Material: ABS, POM

Unit: mm

Strength	Life	Color
7N	50,000	White
		Gray

CD1240



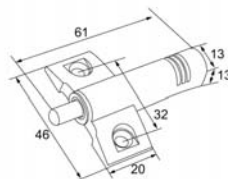
Technical specifications:

Material: ABS, POM

Unit: mm

Strength	Life	Color
20N	50,000	White
		Gray

CD1250



Technical specifications:

Material: ABS, POM

Unit: mm

Strength	Life	Color
7N	50,000	White
		Gray

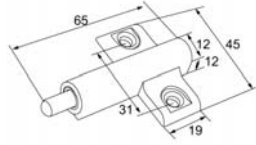


Parts Series

# HANGER & CORNER SERIES

## CD1260/ CD1270

### CD1120



Technical specifications:

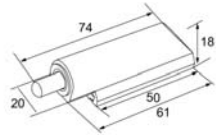
Material: ABS, POM

Unit: mm

Strength	Life	Color
7N	50,000	White
		Gray



### CD1270



Technical specifications:

Material: ABS, POM

Unit: mm

Strength	Life	Color
7N	50,000	White
		Gray

Parts Series

# HANGER & CORNER SERIES



CD5402/ CD5403/ CD5401/ CD5404

## CD5402



Technical specifications:

Material: ABS, POM

Unit: mm

Strength	Life	Magnetism	Color
14N	50,000	2500Gs	White
			Gray

## CD5403



Technical specifications:

Material: ABS, POM

Unit: mm

Strength	Life	Magnetism	Color
14N	50,000	2500Gs	White
			Gray

## CD5401



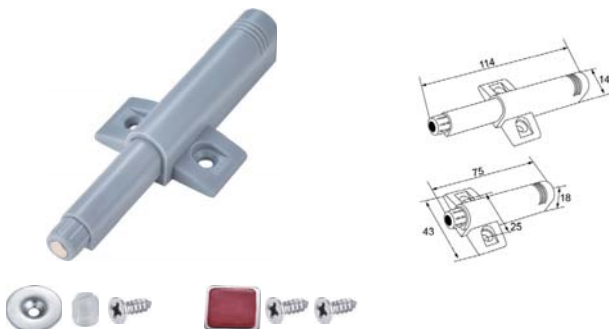
Technical specifications:

Material: ABS, POM

Unit: mm

Strength	Life	Magnetism	Color
18N	50,000	2500Gs	White
			Gray

## CD5404



Technical specifications:

Material: ABS, POM

Unit: mm

Strength	Life	Magnetism	Color
18N	50,000	2500Gs	White
			Gray

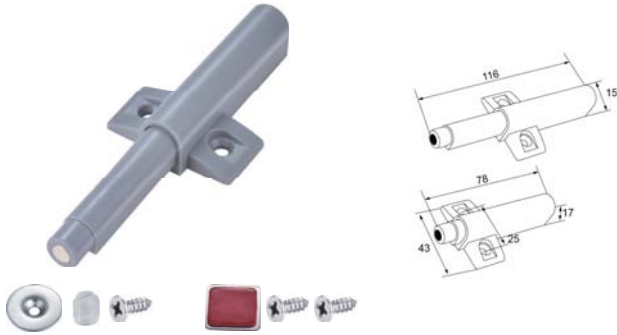


Parts Series

# HANGER & CORNER SERIES

CD5405/ CD5406/ CD5407/ CD5408

CD5405



Technical specifications:

Material: ABS, POM

Unit: mm

Strength	Life	Magnetism	Color
18N	50,000	2500Gs	White
			Gray



Parts Series

CD5406



Technical specifications:

Material: ABS, POM

Unit: mm

Strength	Life	Magnetism	Color
19N	50,000	2500Gs	Gold
			Silver

CD5407



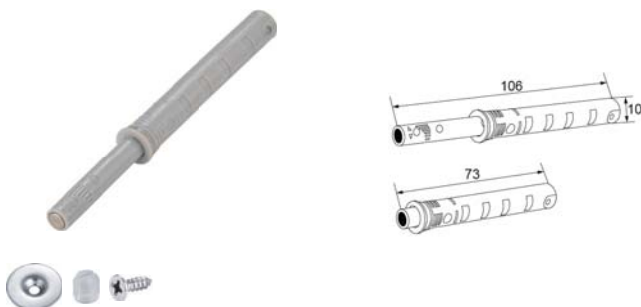
Technical specifications:

Material: ABS, POM

Unit: mm

Strength	Life	Magnetism	Color
21N	50,000	2500Gs	Gold
			Silver

CD5408



Technical specifications:

Material: ABS, POM

Unit: mm

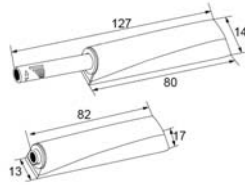
Strength	Life	Magnetism	Color
20N	50,000	3000Gs	White
			Gray

# HANGER & CORNER SERIES



CD5400/ CD5409/ CD5410/ CD5411

CD5400



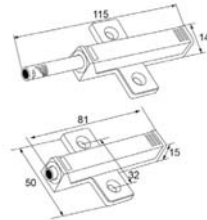
Technical specifications:

Material: ABS, POM

Unit: mm

Strength	Life	Magnetism	Color
20N	50,000	3000Gs	White
			Gray

CD5409



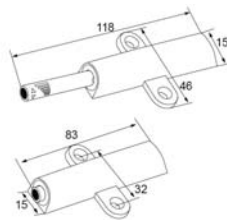
Technical specifications:

Material: ABS, POM

Unit: mm

Strength	Life	Magnetism	Color
20N	50,000	3000Gs	White
			Gray

CD5410



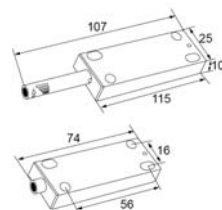
Technical specifications:

Material: ABS, POM

Unit: mm

Strength	Life	Magnetism	Color
20N	50,000	3000Gs	White
			Gray

CD5411



Technical specifications:

Material: ABS, POM

Unit: mm

Strength	Life	Magnetism	Color
20N	50,000	3000Gs	White
			Gray

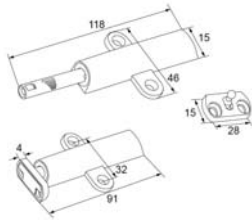


Parts Series

# HANGER & CORNER SERIES

## CD5412/ CD5413/ CD5414

### CD5412



Technical specifications:

Material: ABS, POM

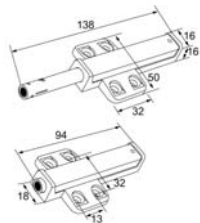
Unit: mm

Strength	Life	Magnetism	Color
20N	50,000	/	White
			Gray



Parts Series

### CD5413



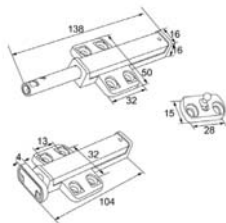
Technical specifications:

Material: ABS, POM

Unit: mm

Strength	Life	Magnetism	Color
50N	50,000	3400Gs	White
			Gray

### CD5414



Technical specifications:

Material: ABS, POM

Unit: mm

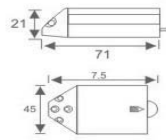
Strength	Life	Magnetism	Color
50N	50,000	/	White
			Gray

# DOOR STOPPER SERIES



CD5310/ CD5330/ CD5340

CD5310



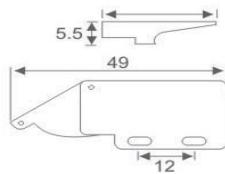
Technical specifications:

Material: plastic

Unit: mm

Height	Length	Color
45	71	White
	71	Black
	71	Gray
	71	Brown

CD5330



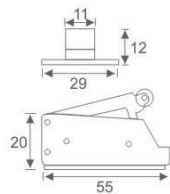
Technical specifications:

Material: plastic & iron

Unit: mm

Height	Length	Color
/	/	Chrome Plated

CD5340



Technical specifications:

Material: plastic & iron

Unit: mm

Height	Length	Color
20	/	Chrome Plated

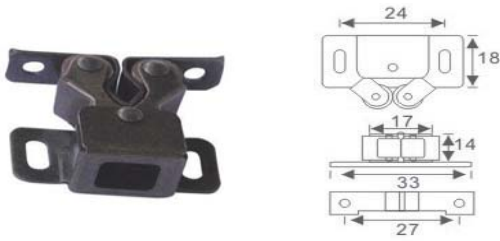


Parts Series

# DOOR STOPPER SERIES

ZD1440/ ZD1450/ ZD1460/ ZD1470

ZD1440



Technical specifications:

Material: plastic & iron

Unit: mm

Height	Length	Color	Item No.
/	/	Antique Copper	281.113.011
/	/	Gold Plated	281.113.008
/	/	Zinc	281.113.010



Parts Series

ZD1450



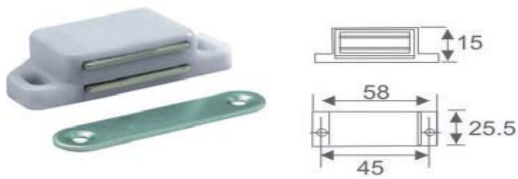
Technical specifications:

Material: plastic & iron

Unit: mm

Height	Length	Color
/	60	White
/	60	Black
/	60	Gray
/	60	Brown

ZD1460



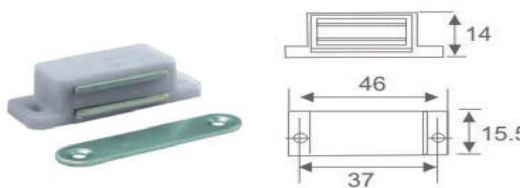
Technical specifications:

Material: plastic & iron

Unit: mm

Height	Length	Color
/	58	White
/	58	Black
/	58	Gray
/	58	Brown

ZD1470



Technical specifications:

Material: plastic & iron

Unit: mm

Height	Length	Color
/	46	White
/	46	Black
/	46	Gray
/	46	Brown

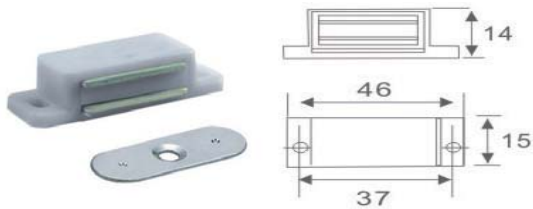


# DOOR STOPPER SERIES

**MEATON**

ZD1480/ ZD5010/ ZD5020/ ZD5030

## ZD1480



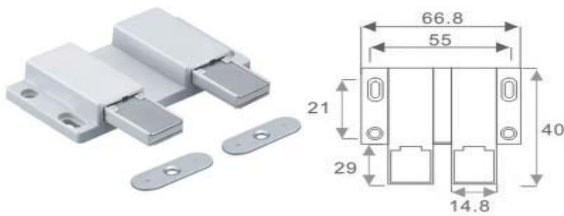
Technical specifications:

Material: plastic & iron

Unit: mm

Height	Length	Color
/	46	White
/	46	Brown

## ZD5010



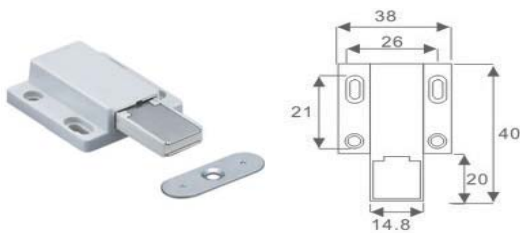
Technical specifications:

Material: plastic & iron

Unit: mm

Height	Length	Color
/	66.8	White
/	66.8	Black
/	66.8	Gray
/	66.8	Brown

## ZD5020



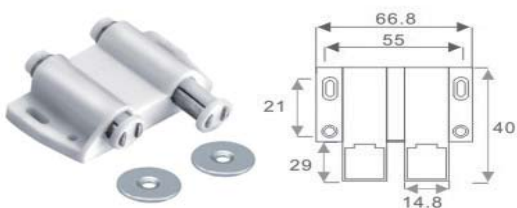
Technical specifications:

Material: plastic & iron

Unit: mm

Height	Length	Color
/	38	White
/	38	Black
/	38	Gray
/	38	Brown

## ZD5030



Technical specifications:

Material: plastic & iron

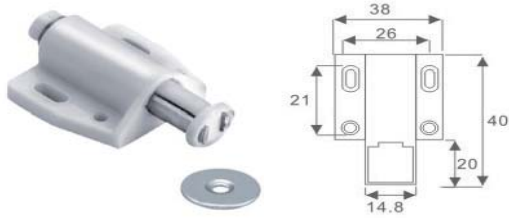
Unit: mm

Height	Length	Color
/	66.8	White
/	66.8	Black
/	66.8	Gray
/	66.8	Brown

# DOOR STOPPER SERIES

ZD5040/ ZD7005/ ZD7007/ ZD7008

ZD5040



Technical specifications:

Material: plastic & iron

Unit: mm

Height	Length	Color
/	38	White
	38	Black
	38	Gray
	38	Brown



Parts Series

ZD7005



Technical specifications:

Material: zinc alloy

Unit: mm

Height	Diameter	Color
28	46	Brushed Nickel
	46	Gold Plated
	46	Antique Brass
	46	Chrome Plated

ZD7007



Technical specifications:

Material: zinc alloy

Unit: mm

Height	Length	Color
/	53	Brushed Nickel
	53	Chrome Plated

ZD7008



Technical specifications:

Material: zinc alloy

Unit: mm

Height	Diameter	Color
74	36	Brushed Nickel
	36	Chrome Plated

# OTHER SERIES

## QA0001/ QA0002/ QA0003/ QA0012

### QA0001



Technical specifications:

Material: ABS

Unit: mm

Code	Size	Color
QA0001-50	50 x 20	Black
QA0001-60	60 x 20	Black
QA0001-80	80 x 20	Black

### QA0002



Technical specifications:

Material: ABS

Unit: mm

Code	Size	Color
QA0002-60	60 x 20	Gold Plated
QA0002-80	80 x 20	Gold Plated

### QA0003



Technical specifications:

Material: ABS

Unit: mm

Code	Size	Color
QA0003	60 x 20	Gold Plated

### QA0012



Technical specifications:

Material: ABS

Unit: mm

Code	Size	Color
QA0012-60	60 x 16	Gold Plated
QA0012-80	80 x 18	Gold Plated



Parts Series

# OTHER SERIES

## ST0020/ ST0030/ ST0040

### ST0020



Technical specifications:

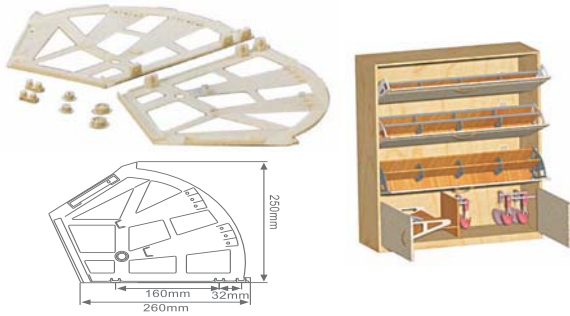
Material: plastic  
Size: 250-600mm

Unit: mm

Diameter	Size	Color
/	250	Black
	250	White
	250	Gray
.....		

Parts Series

### ST0030



Technical specifications:

Material: plastic  
Size: 250-660mm

Unit: mm

Diameter	Size	Color
/	250	Black
	250	White
	250	Gray
.....		

### ST0040



Technical specifications:

Material: plastic

Unit: mm

Diameter	Size	Color
/	238 x 115	Black
	238 x 115	White
	238 x 115	Yellow

# OTHER SERIES

QA1001/ QA1002/ QA2001/ QA3002

QA1001



Technical specifications:

Material: iron

Unit: mm

Size	Length	Color
3	/	Zinc
4	/	Zinc

QA1002



Technical specifications:

Material: iron

Unit: mm

Size	Length	Color
3	/	Zinc
4	/	Zinc

QA2001



Technical specifications:

Material: wood

Unit: mm

Size	Length	Color
/	/	Wood

QA3002



Technical specifications:

Material: stainless steel

Unit: mm

Diameter	Size	Color
12	12 x 25-100	Brushed Nickel
	12 x 25-100	Chrome Plated
16	16 x 25-100	Brushed Nickel
	16 x 25-100	Chrome Plated
19	19 x 25-100	Brushed Nickel
	19 x 25-100	Chrome Plated



Parts Series

# OTHER SERIES

## QA4010/ QA4011/QA4012

### QA4010



Technical specifications:

Material: plastic

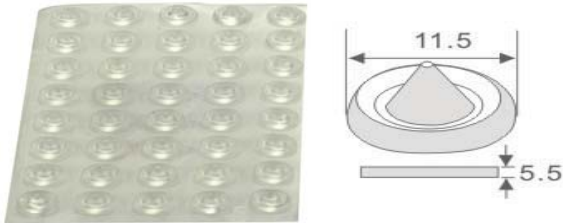
Unit: mm

Diameter	Thickness	Color
8	2	White
	2	Transparent



Parts Series

### QA4011



Technical specifications:

Material: plastic

Unit: mm

Diameter	Thickness	Color
11.5	5.5	White
	5.5	Transparent

### QA4012



Technical specifications:

Material: plastic

Unit: mm

Diameter	Thickness	Color
10	1.5	White
	1.5	Transparent